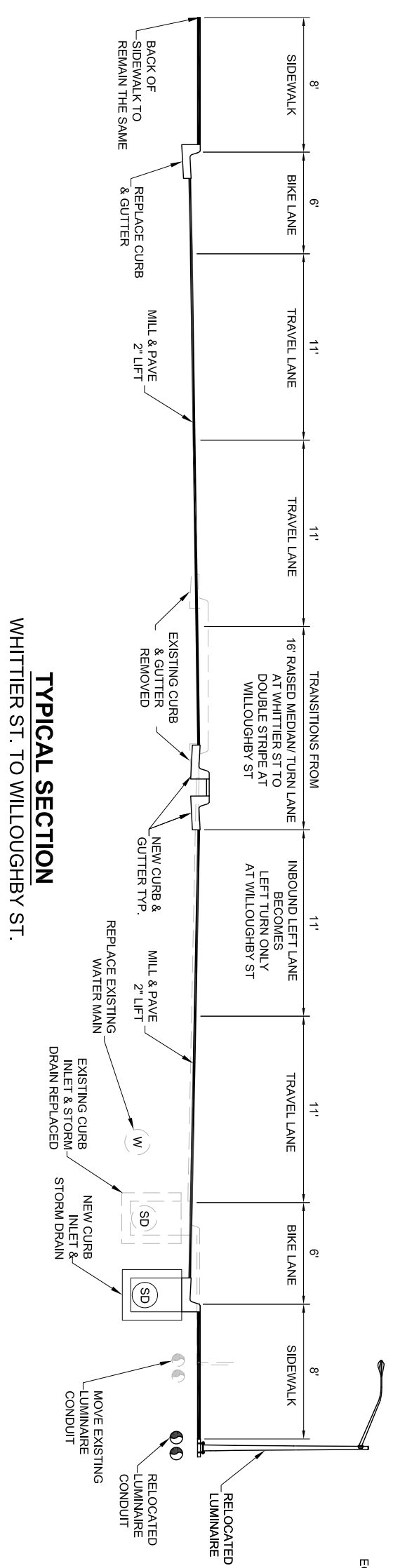
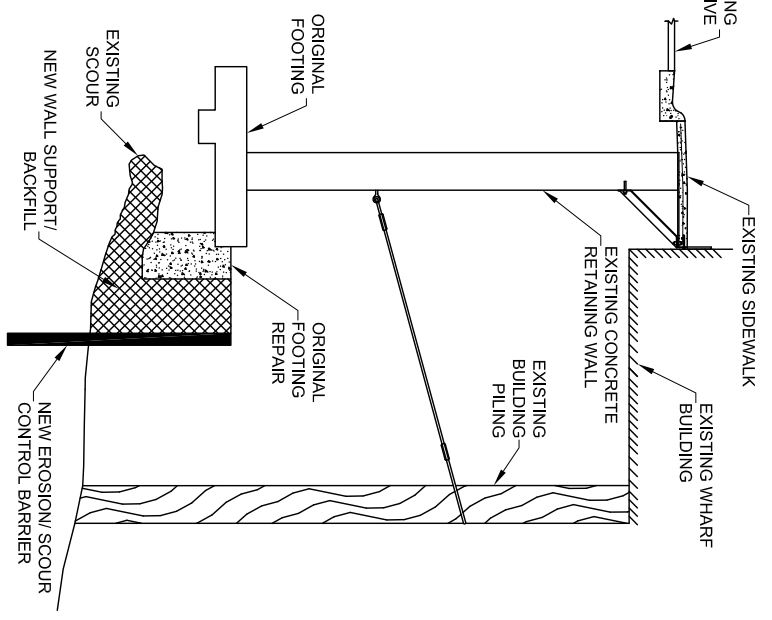


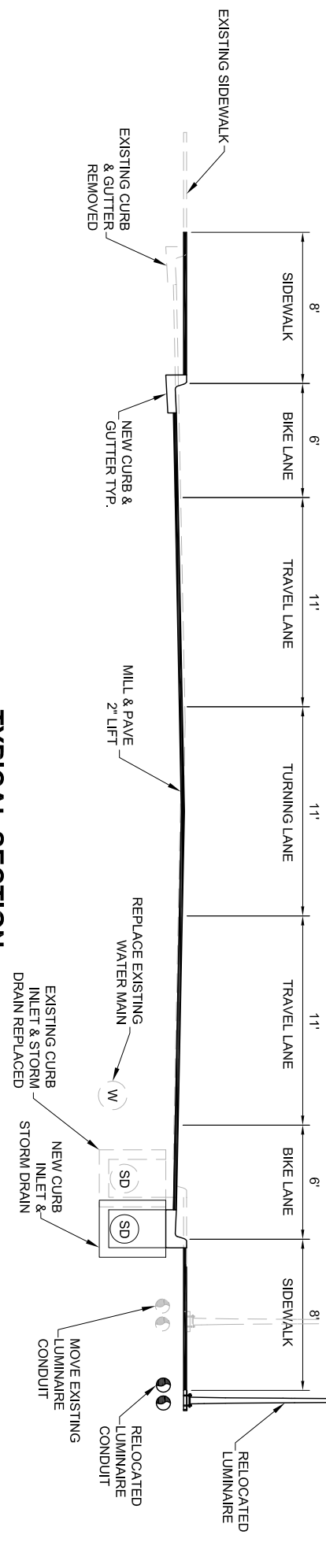
TYPICAL SECTION - 10TH ST TO WHITTIER ST



TYPICAL SECTION
WHITTIER ST. TO WILLOUGHBY ST.



TYPICAL SECTION
MERCHANT'S WHARF RETAINING WALL REPAIRS



TYPICAL SECTION
WILLOUGHBY ST. TO MAIN ST.

DO NOT SCALE FROM THESE DRAWINGS USE DIMENSIONS

DESIGNED BY:	L. CHAMBERS	STATE OF ALASKA DEPARTMENT OF TRANSPORTATION & PUBLIC FACILITIES SOUTHEAST REGION
DRAWN BY:	L. CHAMBERS	
PATH:	Q:\JUN069393\PLANS\TXR\69393_MASTER CT 20140128.DWG	
TAB:	5 Tuesday, February 18, 2014 2:58:05 PM	TRIPP, CHARLES M (DOT)
NO.	DATE	REVISIONS DESCRIPTION
PROJECT DESIGNATION		YEAR
NH-0932(047)		2014
SHEET NO.	5	TOTAL SHEETS
		5

TYPICAL SECTIONS

EGAN DRIVE IMPROVEMENTS
MAIN ST. TO 10TH ST.
PROJECT #69393