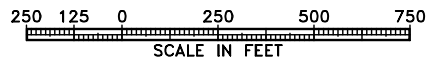
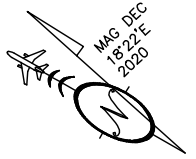
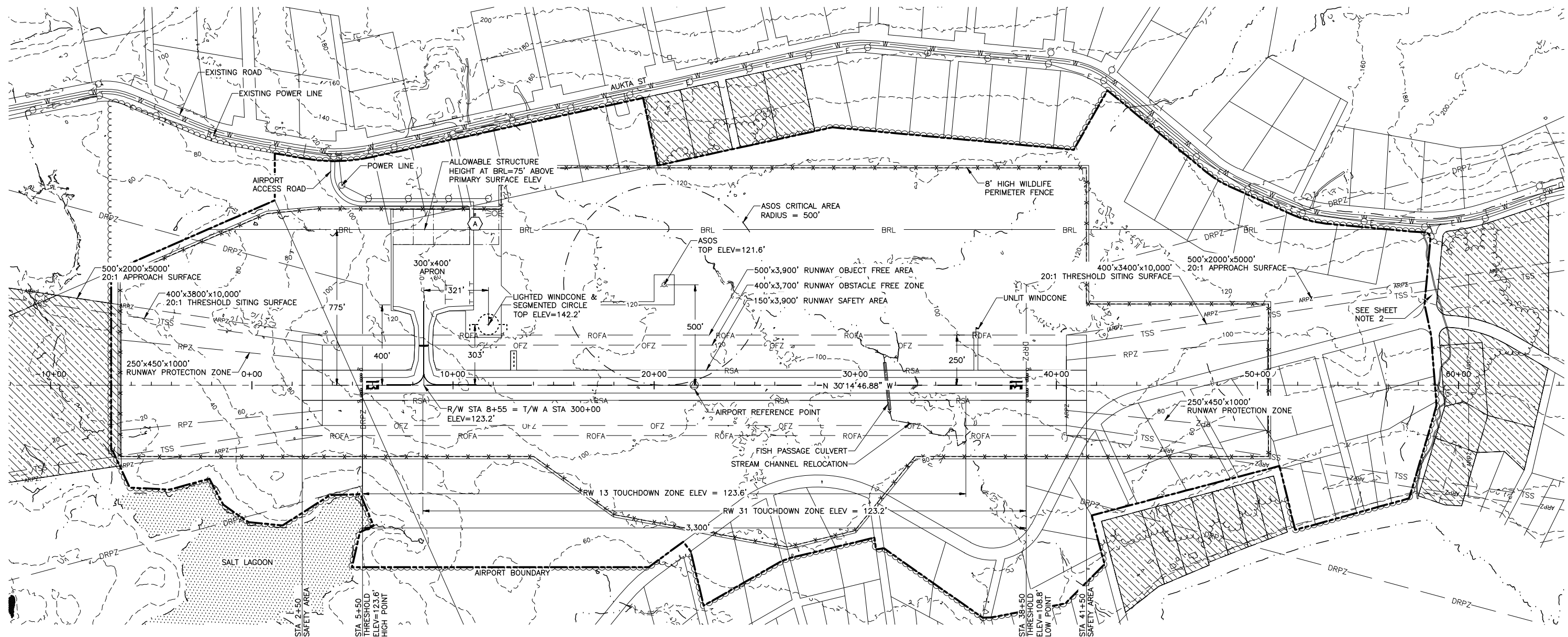


Date Plotted: 2/12/2020, 3:02 PM
 Layout Name: F:\2017\1717\UN-ANGoon-1\Fpwr1\ANGoon-1.dwg
 File Name:
 Designed By: ENT
 Drawn By: JMS
 Checked By: JMS
 2/12/2020 1:39 PM



SHEET NOTES:

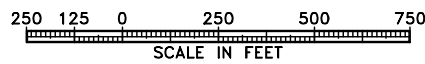
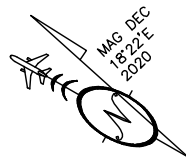
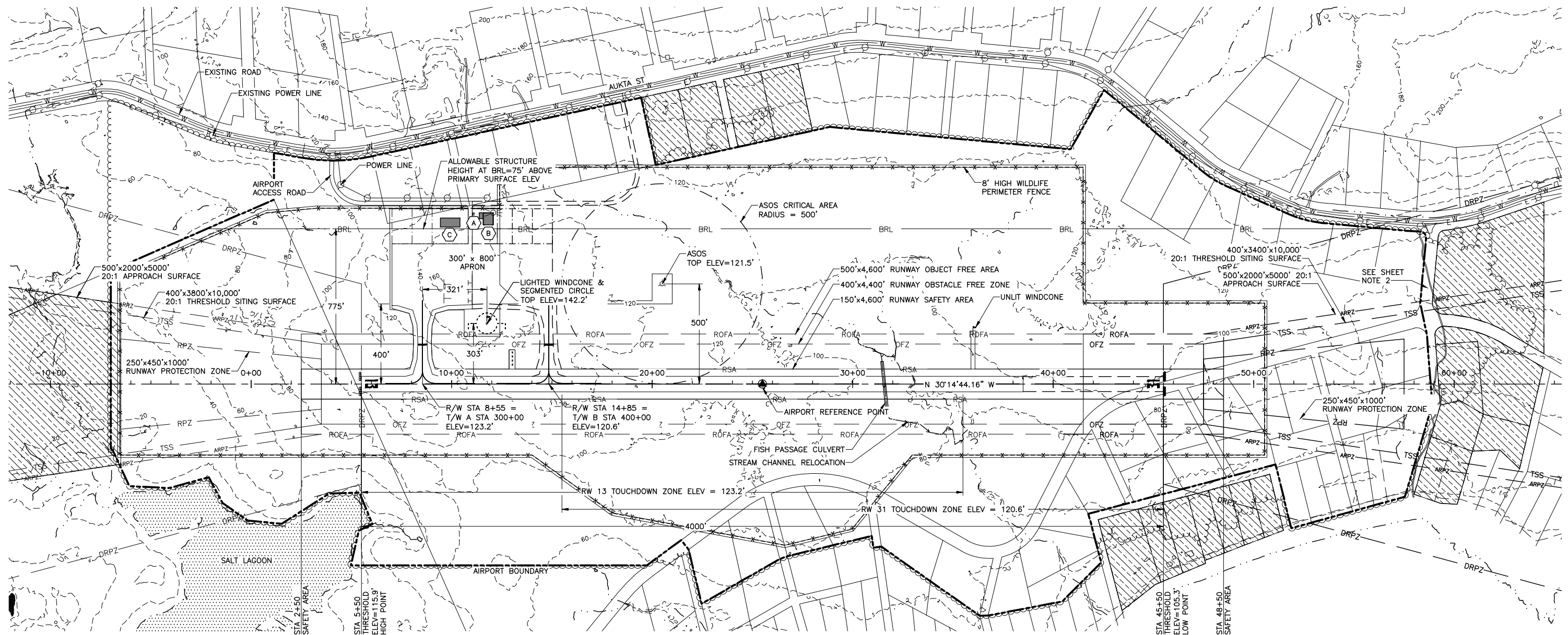
- SEE INNER APPROACH AND AIRSPACE DRAWINGS FOR BUILDING ELEVATIONS AND OBSTRUCTIONS.
- PLATTED PRIVATE PROPERTY ACCESS TO BE RELOCATED DURING NEAR TERM DEVELOPMENT.

BY	DATE	REVISION

STATE OF ALASKA
DEPARTMENT OF TRANSPORTATION
AND PUBLIC FACILITIES
SOUTHCOST REGION

ANGOON AIRPORT
 ANGOON, ALASKA
 AIRPORT LAYOUT PLAN

DATE: 2/12/2020
 SHEET: 3 OF 11
 AIRPORT LAYOUT PLAN DRAWING - NEAR TERM



SHEET NOTES:

1. SEE INNER APPROACH AND AIRSPACE DRAWINGS FOR BUILDING ELEVATIONS AND OBSTRUCTIONS.
2. PLATTED PRIVATE PROPERTY ACCESS TO BE RELOCATED DURING NEAR TERM DEVELOPMENT.

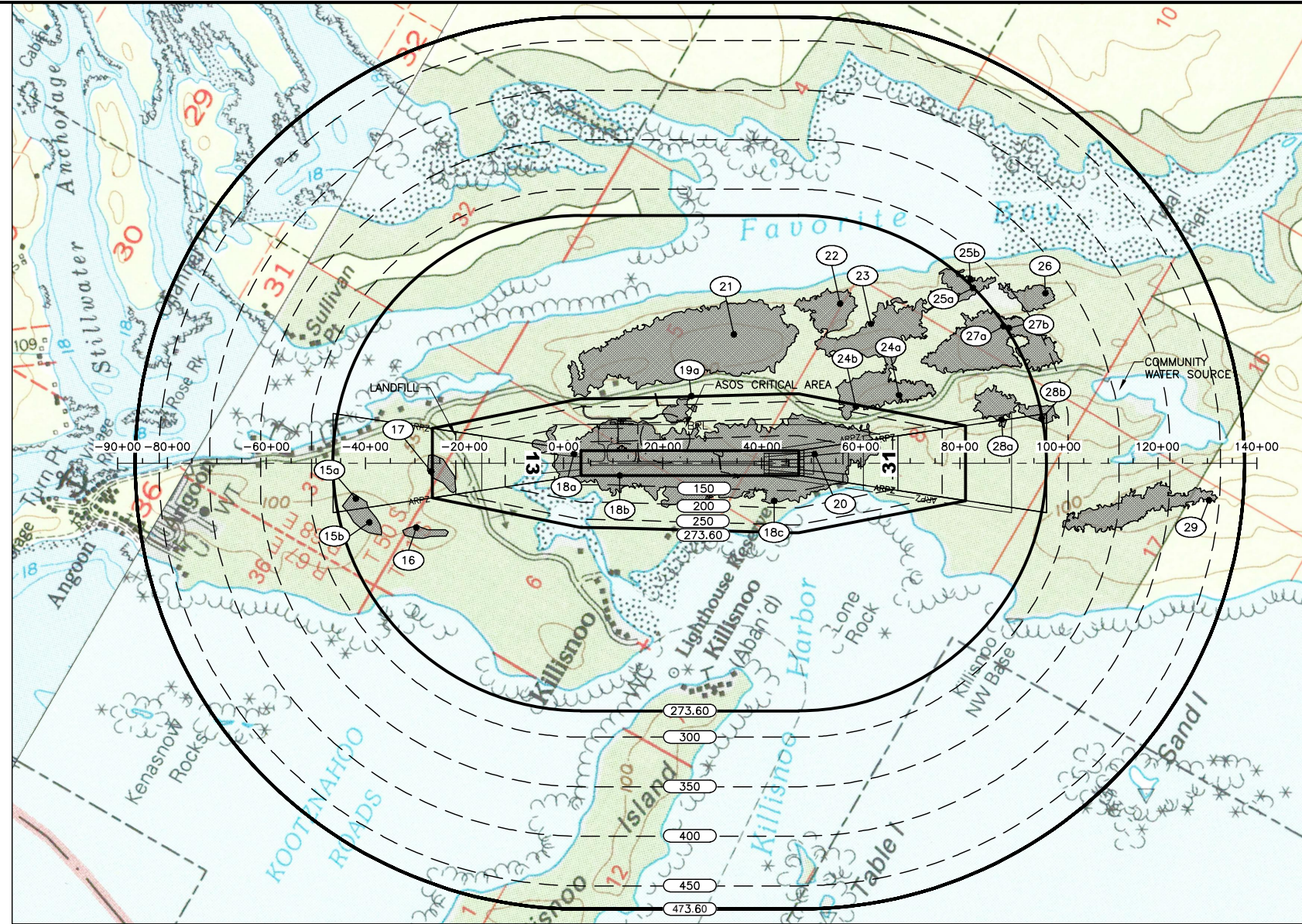
BY	DATE	REVISION

**STATE OF ALASKA
 DEPARTMENT OF TRANSPORTATION
 AND PUBLIC FACILITIES
 SOUTHCOST REGION**

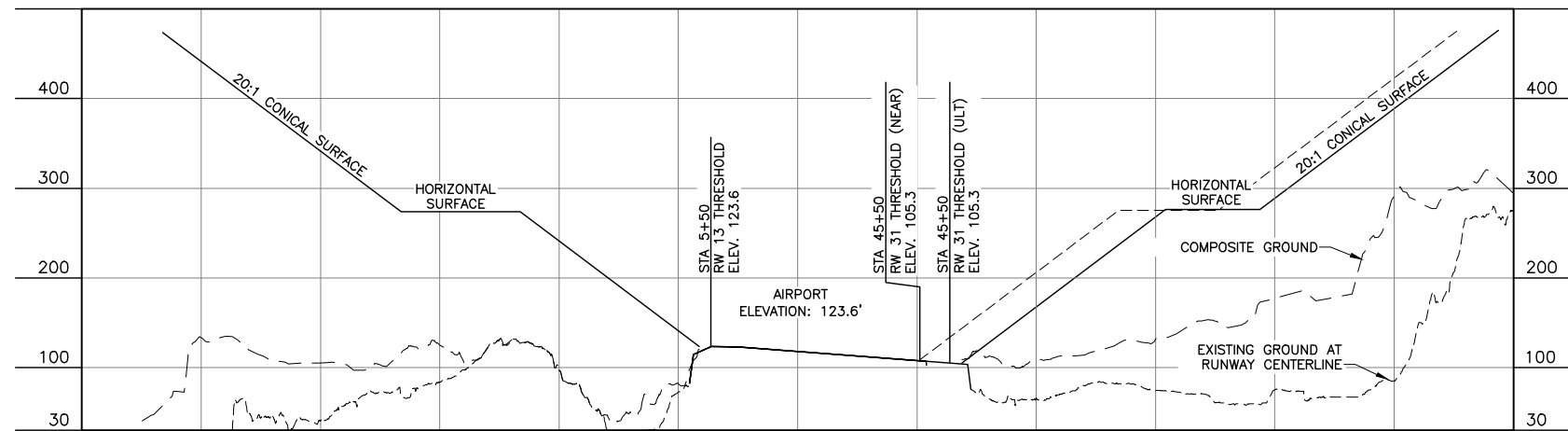
ANGOON AIRPORT
 ANGOON, ALASKA
 AIRPORT LAYOUT PLAN

AIRPORT LAYOUT PLAN DRAWING - ULTIMATE

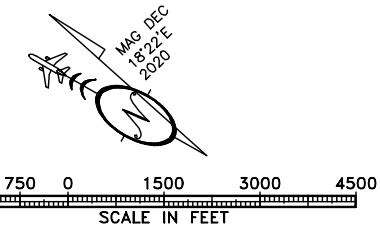
DATE: 2/12/2020
 SHEET: 4 OF 11



AIRSPACE PLAN



AIRSPACE PROFILE



AIRPORT AIRSPACE LEGEND	
	AIRSPACE ELEVATION (SURFACE DIVIDERS)
	AIRSPACE CONTOURS
	RUNWAY CENTERLINE (EXTENDED)

NOTES:

- REFER TO INNER PORTION OF APPROACH SURFACE (SHEETS 6 - 9) FOR CLOSE OBSTRUCTIONS.
- REFER TO THE TERMINAL AREA PLAN (SHEET 10) FOR BUILDING LOCATIONS AND ELEVATIONS.
- MAPPING IS FROM US GEOLOGICAL SURVEY (USGS) MAPS SITKA (B-2) & SITKA (C-2).
- LANDFILL IS 2807' FROM RUNWAY 13 THRESHOLD.
- OBSTRUCTION ANALYSIS BASED ON AN AIRBORNE LIDAR SURVEY COMPLETED BY KODIAK MAPPING IN THE SPRING OF 2017 AND A CONTROL AND TOPOGRAPHIC SURVEY PERFORMED BY DOT&PF IN 2017, BOTH IN ACCORDANCE WITH FAA AC 150/5300-18B.

14 CFR PART 77 DIMENSIONS (ULTIMATE) UTILITY, NP APPROACH, ≥1 SM VISIBILITY	
DESCRIPTION	DIMENSION
PRIMARY SURFACE	500'x4400'
HORIZONTAL SURFACE ELEVATION	273.6'
HORIZONTAL SURFACE RADIUS	5,000'
APPROACH SURFACE	500'x2000'x5000'
APPROACH SURFACE SLOPE	20:1
CONICAL SURFACE WIDTH, SLOPE	4000' @ 20:1
TRANSITIONAL SURFACE SLOPE	7:1

14 CFR PART 77 SURFACE OBSTRUCTION DATA

ID#	DESCRIPTION	STATION/OFFSET	TOP ELEV	SURFACE ELEV	SURFACE PENETRATED	SURFACE PENETRATION	DISPOSITION	STAGE TO CORRECT
15a	TREE CLUSTER*	-41+92 / 714 RT	278.5	273.6	APPROACH	4.9	REMOVE	NEAR TERM
15b	TREE CLUSTER*	-39+19 / 1196 RT	288.4	273.6	HORIZONTAL	14.8	TO REMAIN	N/A
16	TREE CLUSTER*	-29+71 / 1299 RT	274.8	273.6	HORIZONTAL	1.2	TO REMAIN	N/A
17	TREE CLUSTER*	-26+72 / 164 RT	288.0	273.6	APPROACH	14.4	REMOVE	NEAR TERM
18a	TREE CLUSTER*	2+14 / 184 LT	240.7	130.4	APPROACH	110.3	REMOVE	NEAR TERM
18b	TREE CLUSTER*	11+36 / 250 RT	246.4	122.4	PRIMARY	124.0	REMOVE	NEAR TERM
18c	TREE CLUSTER*	43+83 / 744 RT	191.5	178.0	TRANSITIONAL	13.5	SELECTIVE REMOVAL	NEAR TERM
19a	TREE CLUSTER*	25+86 / 1360 LT	280.9	273.6	TRANSITIONAL	7.3	SELECTIVE REMOVAL	NEAR TERM
20	TREE CLUSTER*	50+74 / 181 LT	241.7	121.5	APPROACH	120.2	REMOVE	NEAR TERM
21	TREE CLUSTER*	34+40 / 2600 LT	402.4	273.6	HORIZONTAL	128.8	TO REMAIN	N/A
22	TREE CLUSTER*	55+86 / 3224 LT	365.1	273.6	HORIZONTAL	91.5	TO REMAIN	N/A
23	TREE CLUSTER*	62+09 / 2816 LT	564.9	273.6	HORIZONTAL	291.3	TO REMAIN	N/A
24a	TREE CLUSTER*	67+76 / 1375 LT	389.1	273.6	HORIZONTAL	115.5	TO REMAIN	N/A
24b	TREE CLUSTER*	59+04 / 1147 LT	338.3	268.5	TRANSITIONAL	69.8	SELECTIVE REMOVAL	NEAR TERM
25a	TREE CLUSTER*	82+67 / 3540 LT	345.0	273.6	HORIZONTAL	71.4	TO REMAIN	N/A
25b	TREE CLUSTER*	82+12 / 3702 LT	332.8	277.1	CONICAL	55.7	TO REMAIN	N/A
26	TREE CLUSTER*	97+33 / 3435 LT	358.8	326.2	CONICAL	32.6	TO REMAIN	N/A
27a	TREE CLUSTER*	88+85 / 2767 LT	379.1	273.6	HORIZONTAL	105.5	TO REMAIN	N/A
27b	TREE CLUSTER*	89+97 / 2734 LT	398.7	276.2	CONICAL	122.5	TO REMAIN	N/A
28a	TREE CLUSTER*	86+25 / 1374 LT	346.4	273.6	HORIZONTAL	72.8	TO REMAIN	N/A
28b	TREE CLUSTER*	99+98 / 921 LT	322.6	290.7	CONICAL	31.9	TO REMAIN	N/A
29	TREE CLUSTER*	130+30 / 747 RT	493.4	439.6	CONICAL	53.8	TO REMAIN	N/A

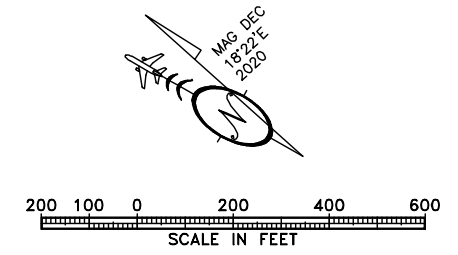
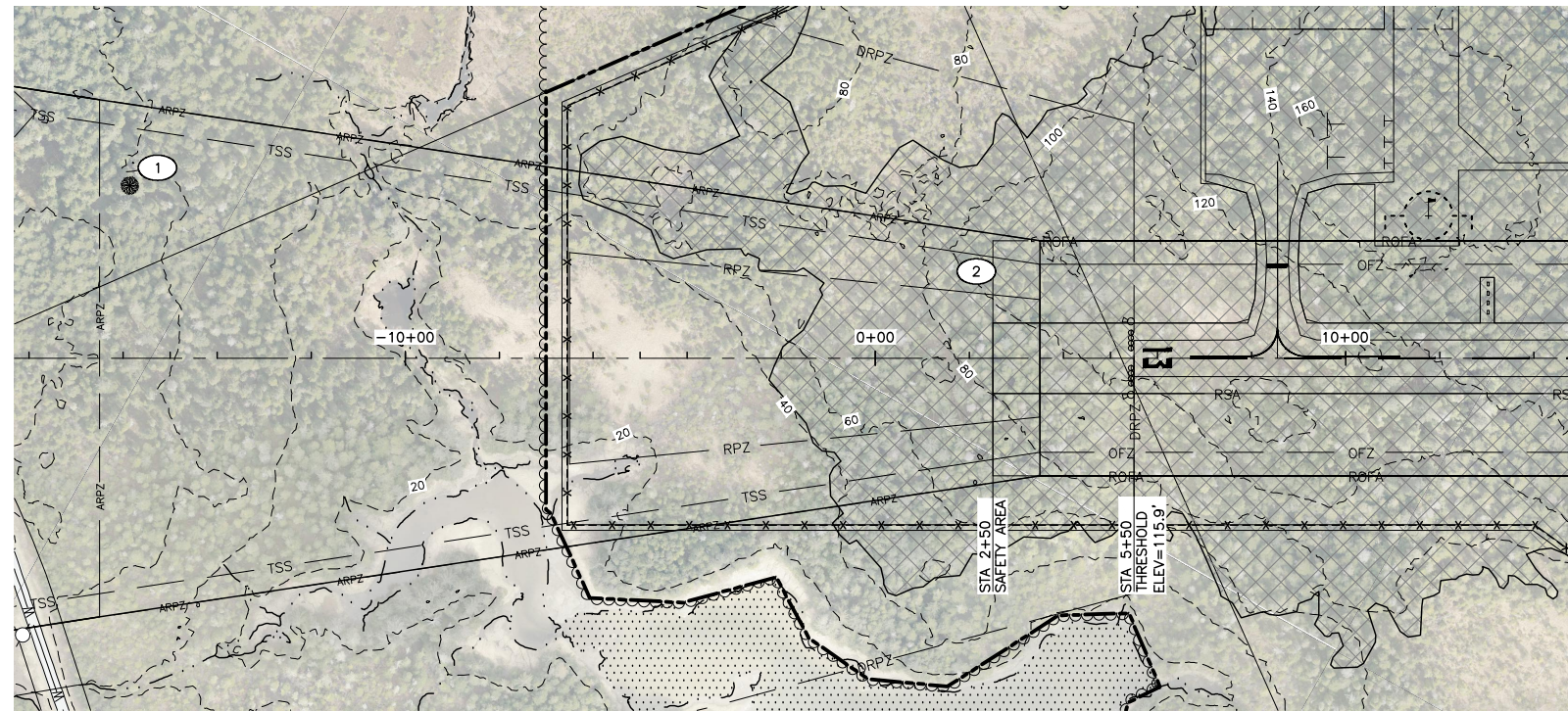
* GREATEST PENETRATION IN A LARGE AREA OF TREE OR TERRAIN PENETRATION. REFER TO HATCHED AREAS ON MAP.

BY	DATE	REVISION

**STATE OF ALASKA
 DEPARTMENT OF TRANSPORTATION
 AND PUBLIC FACILITIES
 SOUTHCOST REGION**

ANGOON AIRPORT
 ANGOON, ALASKA
 AIRPORT LAYOUT PLAN
 AIRPORT AIRSPACE DRAWING
 (14 CFR PART 77)

DATE:
2/12/2020
 SHEET:
5
OF
11

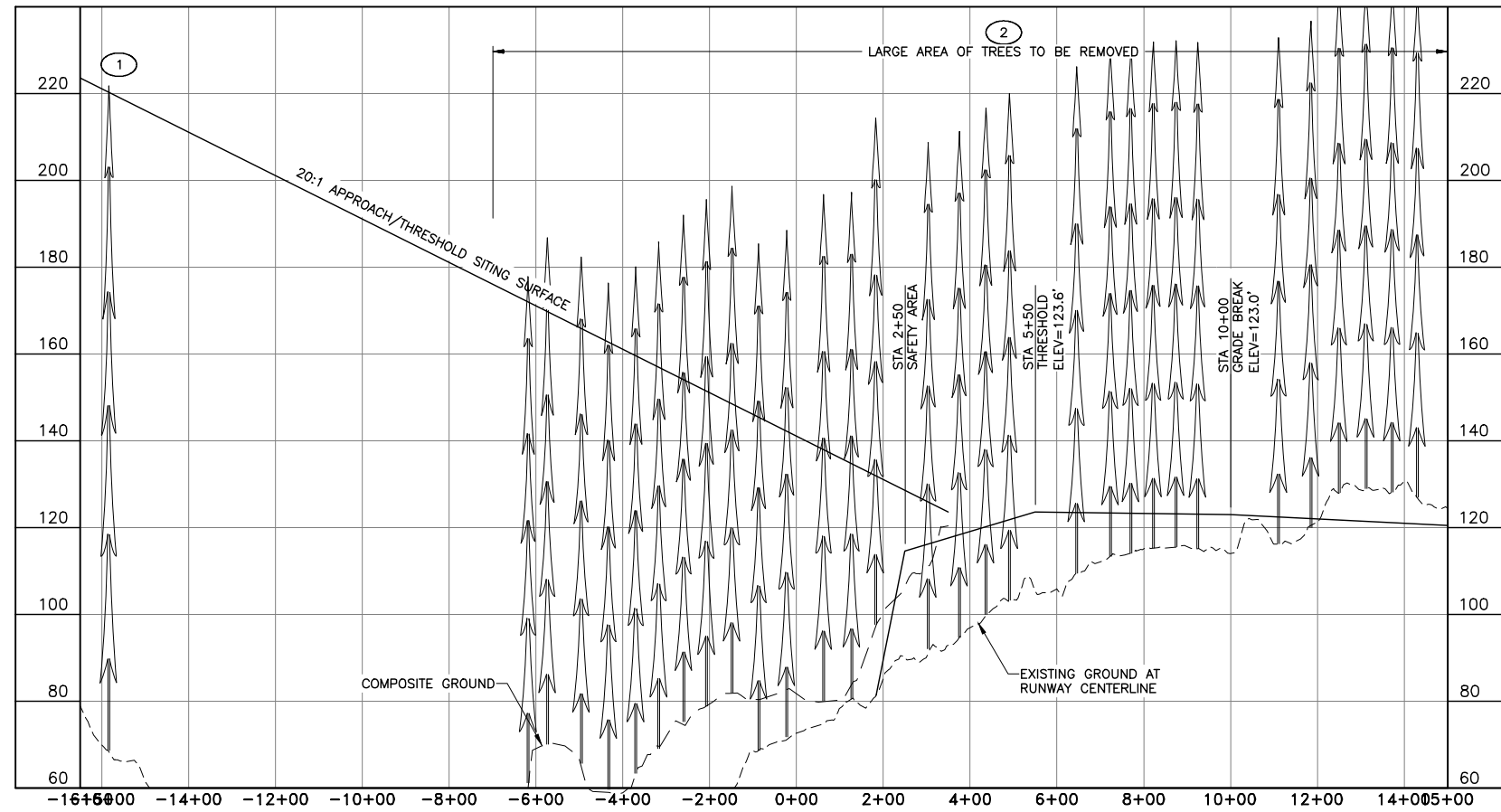


SHEET NOTES:

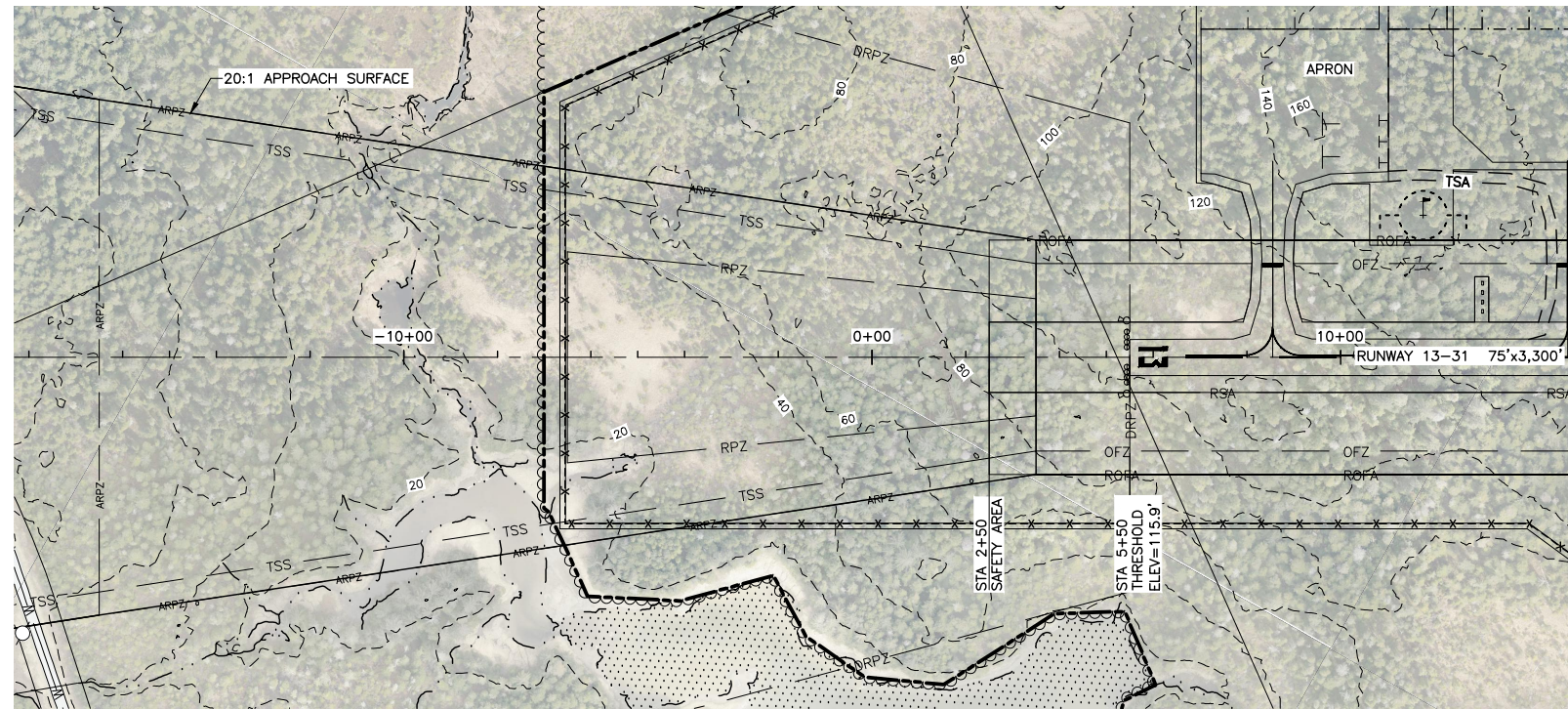
1. OBSTRUCTION ANALYSIS BASED ON AN AIRBORNE LIDAR SURVEY COMPLETED BY KODIAK MAPPING IN THE SPRING OF 2017 AND A CONTROL AND TOPOGRAPHIC SURVEY PERFORMED BY DOT&PF IN 2017, BOTH IN ACCORDANCE WITH FAA AC 150/5300-18B.
2. OBSTRUCTIONS OUTSIDE THE INNER APPROACH ARE SHOWN ON SHEET 5.
3. AFTER NEAR TERM IMPROVEMENTS ARE COMPLETE THERE WILL BE NO RUNWAY 13 THRESHOLD SITING SURFACE OBJECT PENETRATIONS.

OBSTRUCTION DATA (INNER PORTION R/W 13)							
ID#	DESCRIPTION	STATION/OFFSET	TOP ELEV	SURFACE ELEV	SURFACE PENETRATED	SURFACE PENETRATION	DISPOSITION
1	TREE	-15+85 / -367	220.0	220.4	APPROACH	0.4	REMOVE
2	TREE CLUSTER*	2+14 / -184.2	240.7	130.4	APPROACH	110.3	REMOVE
3	STREAM	10+35 / 0	14.3	188.8	APPROACH	N/A	TO REMAIN

* GREATEST PENETRATION IN A LARGE AREA OF TREE OR TERRAIN PENETRATION. REFER TO HATCHED AREAS ON MAP.



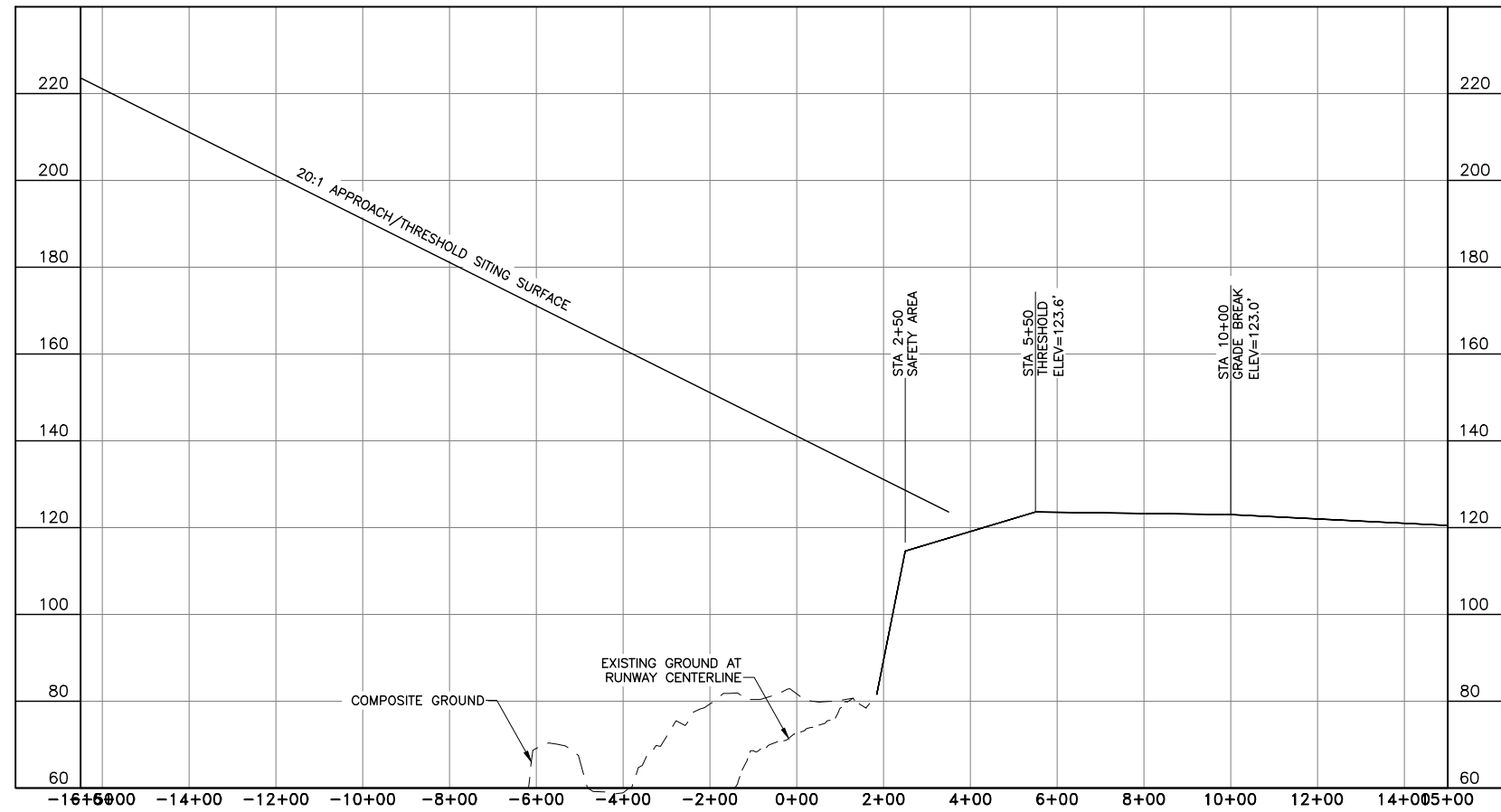
		STATE OF ALASKA DEPARTMENT OF TRANSPORTATION AND PUBLIC FACILITIES SOUTHCOST REGION	
		ANGOON AIRPORT ANGOON, ALASKA AIRPORT LAYOUT PLAN	
		INNER PORTION OF APPROACH SURFACE RUNWAY 13 - NEAR TERM	
DATE:	2/12/2020	SHEET:	6 OF 11
BY:	DATE:	REVISION:	



SHEET NOTES:

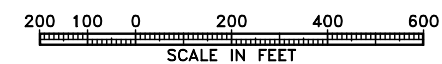
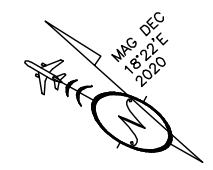
1. OBSTRUCTION ANALYSIS BASED ON AN AIRBORNE LIDAR SURVEY COMPLETED BY KODIAK MAPPING IN THE SPRING OF 2017 AND A CONTROL AND TOPOGRAPHIC SURVEY PERFORMED BY DOT&PF IN 2017, BOTH IN ACCORDANCE WITH FAA AC 150/5300-18B.
2. OBSTRUCTIONS OUTSIDE THE INNER APPROACH ARE SHOWN ON SHEET 5.
3. AFTER NEAR TERM IMPROVEMENTS ARE COMPLETE THERE WILL BE NO RUNWAY 13 THRESHOLD SITING SURFACE OBJECT PENETRATIONS.

OBSTRUCTION DATA (INNER PORTION R/W 13)							
ID#	DESCRIPTION	STATION/OFFSET	TOP ELEV	SURFACE ELEV	SURFACE PENETRATED	SURFACE PENETRATION	DISPOSITION
	NONE						



		STATE OF ALASKA DEPARTMENT OF TRANSPORTATION AND PUBLIC FACILITIES SOUTHCOST REGION	
		ANGOON AIRPORT ANGOON, ALASKA AIRPORT LAYOUT PLAN	
		INNER PORTION OF APPROACH SURFACE RUNWAY 13 - ULTIMATE	
DATE:	2/12/2020	SHEET:	7 OF 11
BY:	DATE:	REVISION:	

Date Plotted: 2/12/2020, 3:12 PM
 Layout Name: I:\Projects\171717\UN-Angoon-Airport\CAD\C0001.dwg
 File Name: I:\Projects\171717\UN-Angoon-Airport\CAD\C0001.dwg
 Designed By: EAT
 Drawn By: JMS
 Checked By: JMS
 Date: 2/12/2020, 3:08 PM

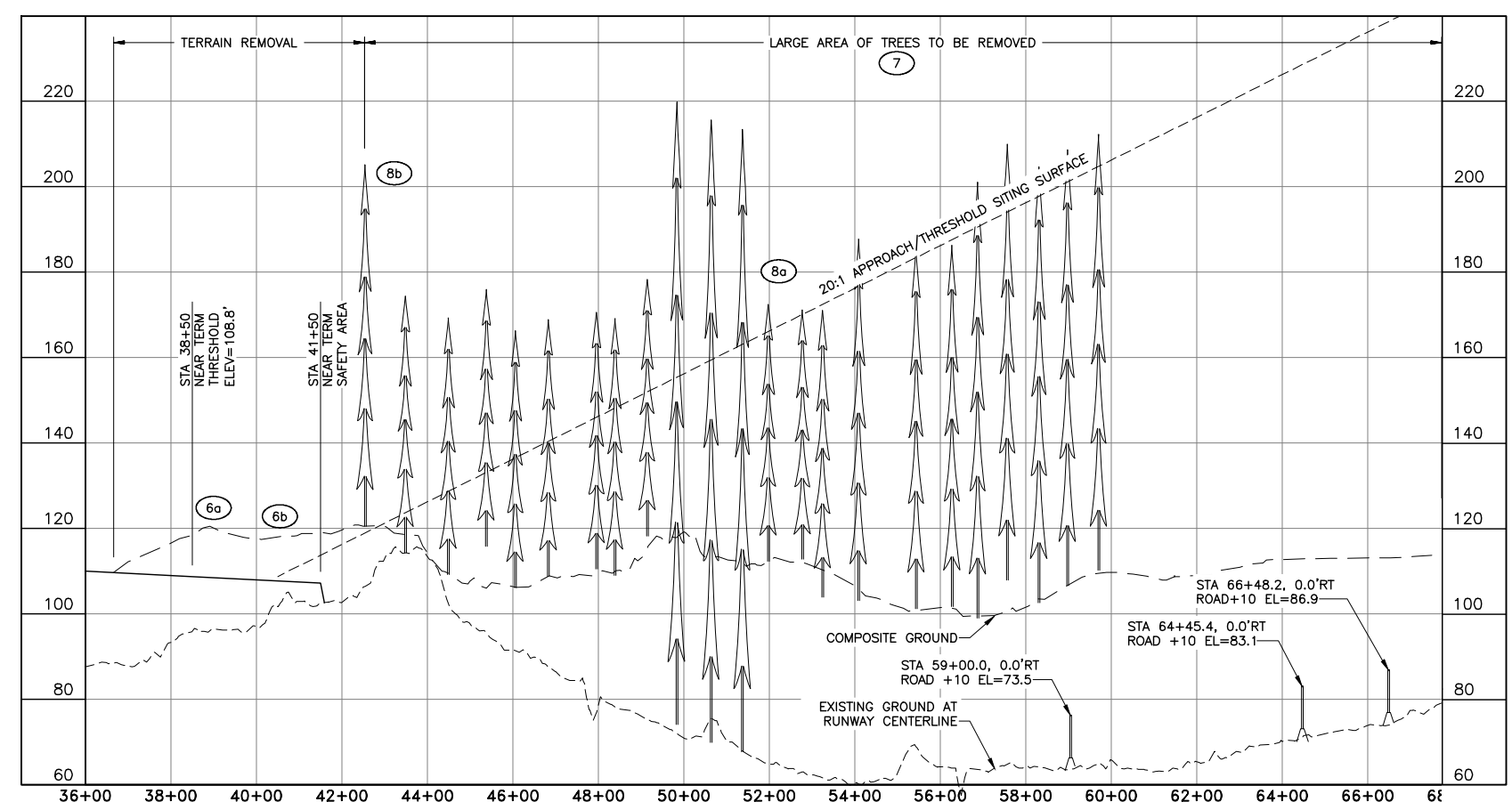


SHEET NOTES:

1. OBSTRUCTION ANALYSIS BASED ON AN AIRBORNE LIDAR SURVEY COMPLETED BY KODIAK MAPPING IN THE SPRING OF 2017 AND A CONTROL AND TOPOGRAPHIC SURVEY PERFORMED BY DOT&PF IN 2017, BOTH IN ACCORDANCE WITH FAA AC 150/5300-18B.
2. OBSTRUCTIONS OUTSIDE THE INNER APPROACH ARE SHOWN ON SHEET 5.
3. AFTER NEAR TERM IMPROVEMENTS ARE COMPLETE THERE WILL BE NO RUNWAY 31 THRESHOLD SITING SURFACE OBJECT PENETRATIONS.

OBSTRUCTION DATA (INNER PORTION R/W 31)						
ID#	DESCRIPTION	STATION/OFFSET	ELEV	SURFACE ELEV	SURFACE PENETRATED	DISPOSITION
6a	TERRAIN POINT*	38+91 / 223 LT	120.5	108.8	PRIMARY	REMOVE
6b	TERRAIN POINT*	40+50 / 250 LT	117.7	108.8	APPROACH	REMOVE
7	TREE CLUSTER*	50+74 / 181 LT	241.7	160.0	APPROACH	REMOVE
8a	TREE CLUSTER*	51+98 / 318 RT	172.4	166.2	APPROACH	SELECTIVE REMOVAL
8b	TREE CLUSTER*	42+55 / 760 RT	205.1	187.5	TRANSITIONAL	SELECTIVE REMOVAL

* GREATEST PENETRATION IN A LARGE AREA OF TREE OR TERRAIN PENETRATION. REFER TO HATCHED AREAS ON MAP.

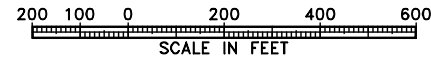


BY	DATE	REVISION

STATE OF ALASKA
DEPARTMENT OF TRANSPORTATION
AND PUBLIC FACILITIES
SOUTHCOST REGION

ANGOON AIRPORT
 ANGOON, ALASKA
 AIRPORT LAYOUT PLAN
 INNER PORTION OF APPROACH SURFACE
 RUNWAY 31 - NEAR TERM

DATE:
2/12/2020
 SHEET:
8
 OF
11



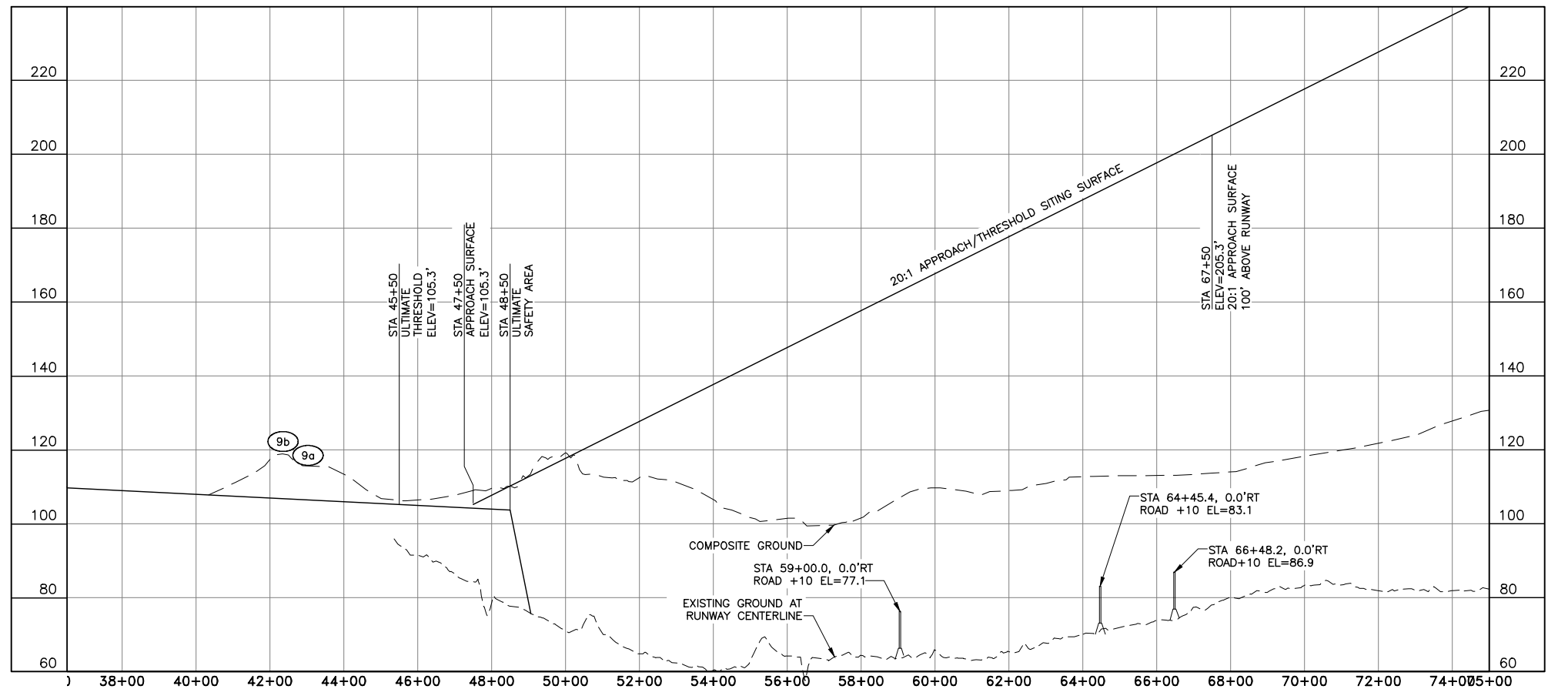
SHEET NOTES:

1. OBSTRUCTION ANALYSIS BASED ON AN AIRBORNE LIDAR SURVEY COMPLETED BY KODIAK MAPPING IN THE SPRING OF 2017 AND A CONTROL AND TOPOGRAPHIC SURVEY PERFORMED BY DOT&PF IN 2017, BOTH IN ACCORDANCE WITH FAA AC 150/5300-18B.
2. OBSTRUCTIONS OUTSIDE THE INNER APPROACH ARE SHOWN ON SHEET 5.
3. AFTER NEAR TERM IMPROVEMENTS ARE COMPLETE THERE WILL BE NO RUNWAY 31 THRESHOLD SITING SURFACE OBJECT PENETRATIONS.

OBSTRUCTION TABLE (INNER PORTION R/W 31)

ID#	DESCRIPTION	STATION/OFFSET	ELEV	SURFACE ELEV	SURFACE PENETRATED	SURFACE PENETRATION	DISPOSITION
9a	TERRAIN POINT*	43+02 / 155 LT	118.0	106.5	PRIMARY	11.5	REMOVE
9b	TERRAIN POINT*	42+35 / 319 LT	120.8	116.7	TRANSITIONAL	4.1	REMOVE

* GREATEST PENETRATION IN A LARGE AREA OF TREE OR TERRAIN PENETRATION. REFER TO HATCHED AREAS ON MAP.



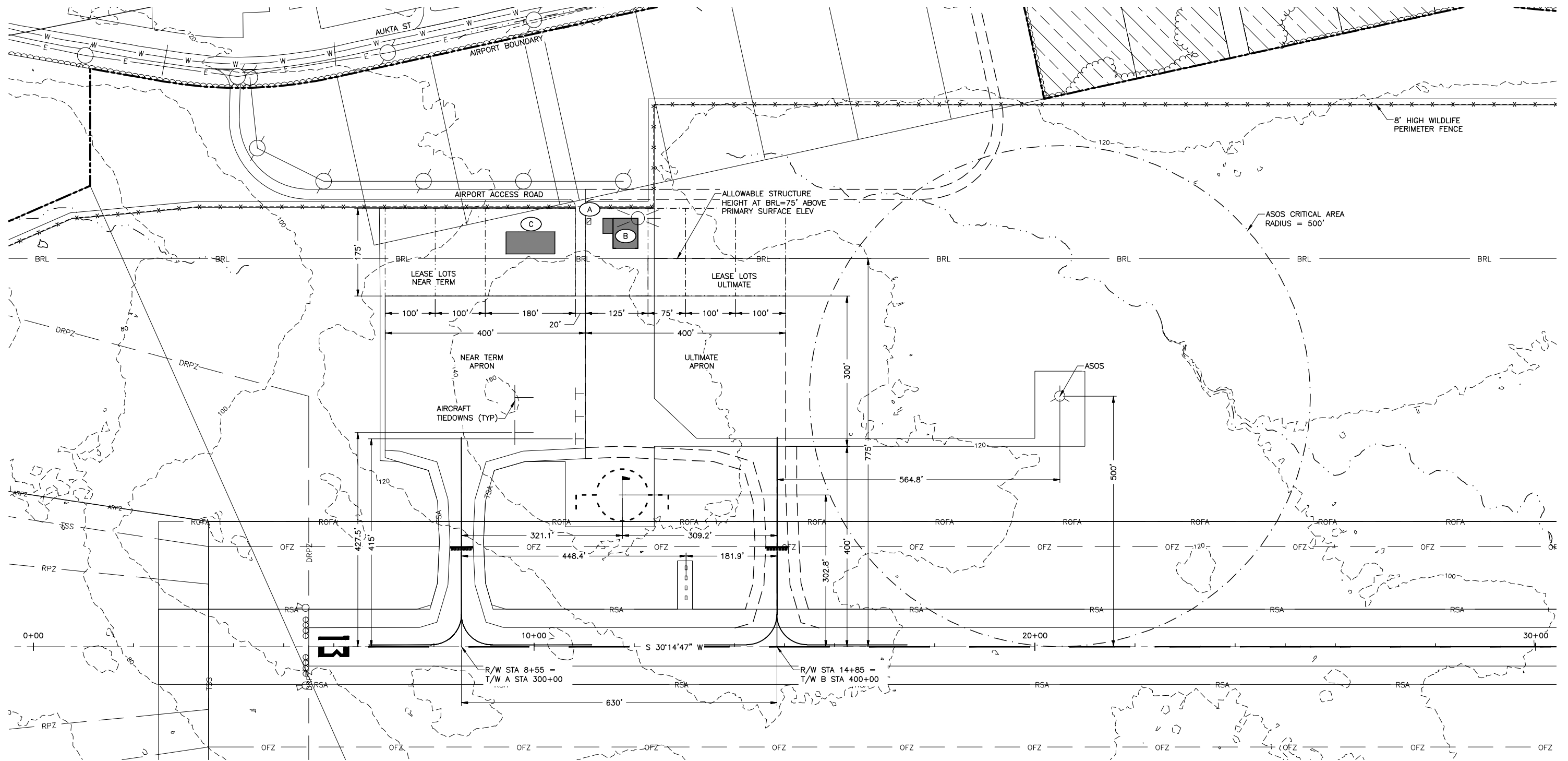
BY	DATE	REVISION

**STATE OF ALASKA
DEPARTMENT OF TRANSPORTATION
AND PUBLIC FACILITIES
SOUTHCOST REGION**

ANGOON AIRPORT
ANGOON, ALASKA
AIRPORT LAYOUT PLAN
INNER PORTION OF APPROACH SURFACE
RUNWAY 31 - ULTIMATE

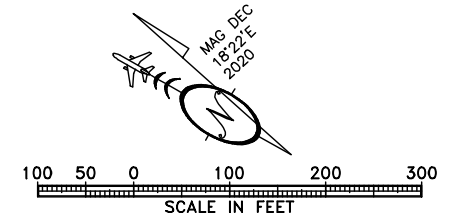
DATE: 2/12/2020
SHEET: 9 OF 11

Date Plotted: 2/12/2020, 1:31 PM
 Layout Name: P:\2017\1717\UN-Angoon-1\FPS\1\1717UN-Angoon.dwg
 File Name: 2/12/2020, 1:31 PM
 Designed By: ENT
 Drawn By: JMS
 Checked By: JMS



BUILDING DATA

BLDG	DESCRIPTION	STATION/OFFSET	TOP ELEV	OBSTRUCTION MARKING	REMARKS
A	ELECTRICAL EQUIPMENT BUILDING (EEB)	11+10 / 843'LT	145'	NONE	20' BUILDING HEIGHT (ASSUMED)
B	SNOW REMOVAL EQUIPMENT BUILDING (SREB)	11+83 / 795'LT	175'	NONE	50' BUILDING HEIGHT (ASSUMED)
C	TERMINAL FACILITY	9+93 / 784'LT	165'	NONE	40' BUILDING HEIGHT (ASSUMED)

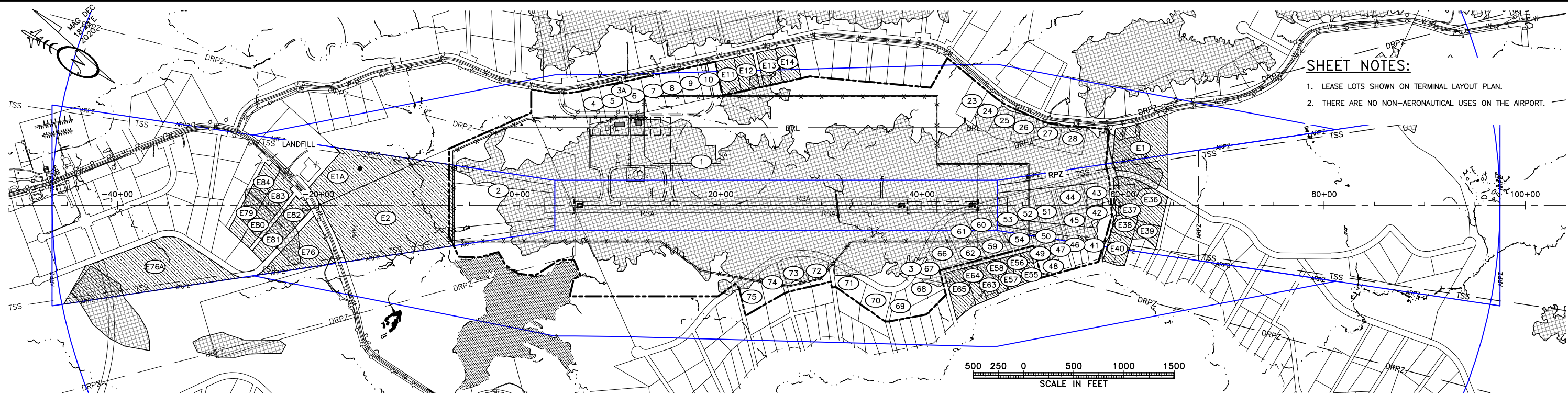


BY	DATE	REVISION

STATE OF ALASKA
DEPARTMENT OF TRANSPORTATION
AND PUBLIC FACILITIES
SOUTHCOST REGION

ANGOON AIRPORT
 ANGOON, ALASKA
 AIRPORT LAYOUT PLAN
 TERMINAL AREA DRAWING

DATE:
 2/12/2020
 SHEET:
10
 OF
11



SHEET NOTES:
 1. LEASE LOTS SHOWN ON TERMINAL LAYOUT PLAN.
 2. THERE ARE NO NON-AERONAUTICAL USES ON THE AIRPORT.

ID #	INTEREST	GRANTOR	GRANTEE	PARCEL SIZE (AC)	DATE ACQUIRED	RECORDED DOC NO	ACQUIRED AIP NO
1	FEE SIMPLE	KOOTZNOOWOO	DOT&PF	179.78	TBD	TBD	TBD
E1	AVIGATION ESMT	KOOTZNOOWOO	DOT&PF	6.73	TBD	TBD	TBD
E1A	AVIGATION ESMT	KOOTZNOOWOO	DOT&PF	6.43	TBD	TBD	TBD
2	FEE SIMPLE	CITY OF ANG	DOT&PF	38.04	TBD	TBD	TBD
E2	AVIGATION ESMT	CITY OF ANG	DOT&PF	20.73	TBD	TBD	TBD
3	FEE SIMPLE	CITY OF ANG	DOT&PF	8.34	TBD	TBD	TBD
3A	FEE SIMPLE	CITY OF ANG	DOT&PF	0.32	TBD	TBD	TBD
4	FEE SIMPLE	A. ASIS	DOT&PF	1.50	TBD	TBD	TBD
5	FEE SIMPLE	D. VIERTHALER	DOT&PF	1.50	TBD	TBD	TBD
6	FEE SIMPLE	B. GEORGE	DOT&PF	1.50	TBD	TBD	TBD
7	FEE SIMPLE	R. DEMMERT	DOT&PF	1.50	TBD	TBD	TBD
8	FEE SIMPLE	KOOTZNOOWOO	DOT&PF	1.50	TBD	TBD	TBD
9	FEE SIMPLE	C. FRED	DOT&PF	1.50	TBD	TBD	TBD
10	FEE SIMPLE	J. THOMPSON	DOT&PF	1.50	TBD	TBD	TBD
E11	AVIGATION ESMT	V. JAMES	DOT&PF	1.50	TBD	TBD	TBD
E12	AVIGATION ESMT	E. JAMES	DOT&PF	1.50	TBD	TBD	TBD
E13	AVIGATION ESMT	E. JACK	DOT&PF	1.50	TBD	TBD	TBD
E14	AVIGATION ESMT	A. ALBERT	DOT&PF	1.50	TBD	TBD	TBD
23	FEE SIMPLE	KOOTZNOOWOO	DOT&PF	1.50	TBD	TBD	TBD
24	FEE SIMPLE	KOOTZNOOWOO	DOT&PF	1.50	TBD	TBD	TBD
25	FEE SIMPLE	KOOTZNOOWOO	DOT&PF	1.50	TBD	TBD	TBD
26	FEE SIMPLE	KOOTZNOOWOO	DOT&PF	1.50	TBD	TBD	TBD
27	FEE SIMPLE	KOOTZNOOWOO	DOT&PF	1.50	TBD	TBD	TBD
28	FEE SIMPLE	KOOTZNOOWOO	DOT&PF	1.50	TBD	TBD	TBD
E36	AVIGATION ESMT	KOOTZNOOWOO	DOT&PF	2.72	TBD	TBD	TBD
E37	AVIGATION ESMT	R. HOGUE	DOT&PF	1.50	TBD	TBD	TBD
E38	AVIGATION ESMT	T. JAMES	DOT&PF	1.00	TBD	TBD	TBD
E39	AVIGATION ESMT	MULTIPLE	DOT&PF	1.00	TBD	TBD	TBD
E40	AVIGATION ESMT	KOOTZNOOWOO	DOT&PF	1.50	TBD	TBD	TBD

ID #	INTEREST	GRANTOR	GRANTEE	PARCEL SIZE (AC)	DATE ACQUIRED	RECORDED DOC NO	ACQUIRED AIP NO
41	FEE SIMPLE	KOOTZNOOWOO	DOT&PF	2.25	TBD	TBD	TBD
42	FEE SIMPLE	T. JAMES	DOT&PF	1.00	TBD	TBD	TBD
43	FEE SIMPLE	E. KOOKESH	DOT&PF	1.50	TBD	TBD	TBD
44	FEE SIMPLE	J. FRANK	DOT&PF	1.50	TBD	TBD	TBD
45	FEE SIMPLE	MULTIPLE	DOT&PF	1.00	TBD	TBD	TBD
46	FEE SIMPLE	R. SOBOLEFF	DOT&PF	0.75	TBD	TBD	TBD
47	FEE SIMPLE	J. MCCLUSKEY	DOT&PF	0.75	TBD	TBD	TBD
48	FEE SIMPLE	J. BROWN	DOT&PF	0.75	TBD	TBD	TBD
49	FEE SIMPLE	E. MCCLUSKEY	DOT&PF	0.75	TBD	TBD	TBD
50	FEE SIMPLE	MULTIPLE	DOT&PF	1.00	TBD	TBD	TBD
51	FEE SIMPLE	KOOTZNOOWOO	DOT&PF	1.50	TBD	TBD	TBD
52	FEE SIMPLE	A.R. BROWN	DOT&PF	1.50	TBD	TBD	TBD
53	FEE SIMPLE	MULTIPLE	DOT&PF	1.50	TBD	TBD	TBD
54	FEE SIMPLE	J. HUNTER	DOT&PF	1.00	TBD	TBD	TBD
E55	AVIGATION ESMT	I. CHULIK	DOT&PF	0.70	TBD	TBD	TBD
E56	AVIGATION ESMT	I. CHULIK	DOT&PF	0.73	TBD	TBD	TBD
E57	AVIGATION ESMT	I. CHULIK	DOT&PF	0.76	TBD	TBD	TBD
E58	AVIGATION ESMT	G. MILLER	DOT&PF	0.79	TBD	TBD	TBD
59	FEE SIMPLE	D. LOGAN	DOT&PF	1.00	TBD	TBD	TBD
60	FEE SIMPLE	MULTIPLE	DOT&PF	1.50	TBD	TBD	TBD
61	FEE SIMPLE	KOOTZNOOWOO	DOT&PF	1.50	TBD	TBD	TBD
62	FEE SIMPLE	KOOTZNOOWOO	DOT&PF	1.00	TBD	TBD	TBD
E63	AVIGATION ESMT	MULTIPLE	DOT&PF	1.00	TBD	TBD	TBD
E64	AVIGATION ESMT	MULTIPLE	DOT&PF	1.00	TBD	TBD	TBD
E65	AVIGATION ESMT	T. FOGARTY	DOT&PF	2.08	TBD	TBD	TBD

ID #	INTEREST	GRANTOR	GRANTEE	PARCEL SIZE (AC)	DATE ACQUIRED	RECORDED DOC NO	ACQUIRED AIP NO
66	FEE SIMPLE	G. NELSON	DOT&PF	1.50	TBD	TBD	TBD
67	FEE SIMPLE	KOOTZNOOWOO	DOT&PF	1.00	TBD	TBD	TBD
68	FEE SIMPLE	R. EDENSHAW	DOT&PF	1.50	TBD	TBD	TBD
69	FEE SIMPLE	KOOTZNOOWOO	DOT&PF	1.00	TBD	TBD	TBD
70	FEE SIMPLE	MULTIPLE	DOT&PF	1.50	TBD	TBD	TBD
71	FEE SIMPLE	R. GEORGE	DOT&PF	1.50	TBD	TBD	TBD
72	FEE SIMPLE	MULTIPLE	DOT&PF	1.50	TBD	TBD	TBD
73	FEE SIMPLE	S. JOHNSON	DOT&PF	1.50	TBD	TBD	TBD
74	FEE SIMPLE	KOOTZNOOWOO	DOT&PF	1.50	TBD	TBD	TBD
75	FEE SIMPLE	MULTIPLE	DOT&PF	1.50	TBD	TBD	TBD
E76	AVIGATION ESMT	KOOTZNOOWOO	DOT&PF	4.52	TBD	TBD	TBD
E76A	AVIGATION ESMT	KOOTZNOOWOO	DOT&PF	15.09	TBD	TBD	TBD
E79	AVIGATION ESMT	G. JOHNSON	DOT&PF	1.50	TBD	TBD	TBD
E80	AVIGATION ESMT	N. KOOKESH	DOT&PF	1.50	TBD	TBD	TBD
E81	AVIGATION ESMT	B. JACK	DOT&PF	1.50	TBD	TBD	TBD
E82	AVIGATION ESMT	K. GONZALES	DOT&PF	1.50	TBD	TBD	TBD
E83	AVIGATION ESMT	M. PERTERSEN	DOT&PF	1.67	TBD	TBD	TBD
E84	AVIGATION ESMT	D. STARR	DOT&PF	1.50	TBD	TBD	TBD

BY	DATE	REVISION

**STATE OF ALASKA
 DEPARTMENT OF TRANSPORTATION
 AND PUBLIC FACILITIES
 SOUTHCOST REGION**

ANGOON AIRPORT
 ANGOON, ALASKA
 AIRPORT LAYOUT PLAN
 AIRPORT PROPERTY MAP

DATE:
2/12/2020
 SHEET:
11
 OF
11