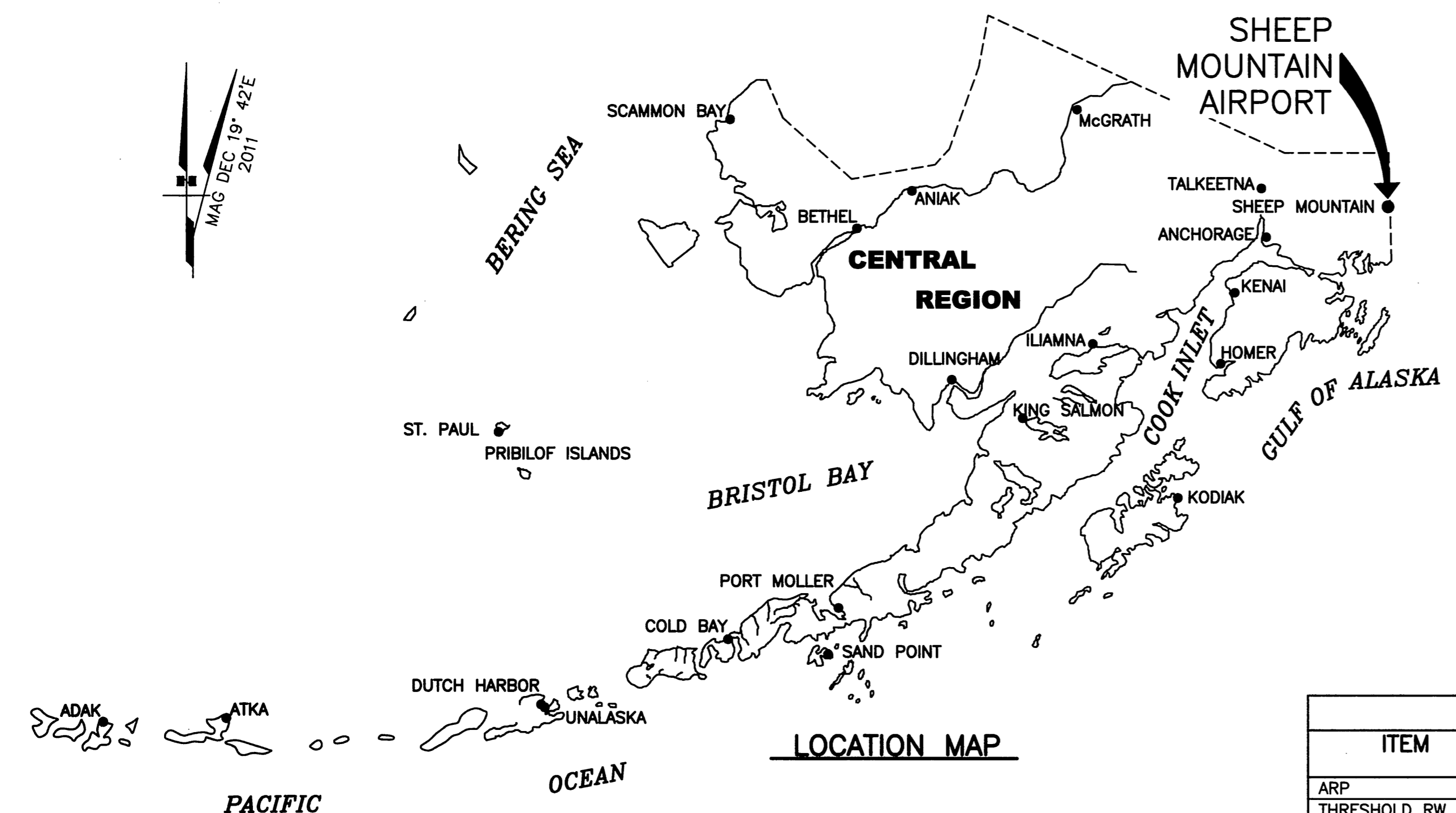


FILE No.: 232-101-1

Designed By: nilewilyn  
 Drawn By: mbauer  
 Checked By: bhanson  
 Date Plotted: 6/04/2013, 7:51 AM  
 Layout Name: DATA (1)  
 File Name: W:\Projects\Sheep Mountain\ALP\Final Drawings\ALP-COVER & P77.dwg

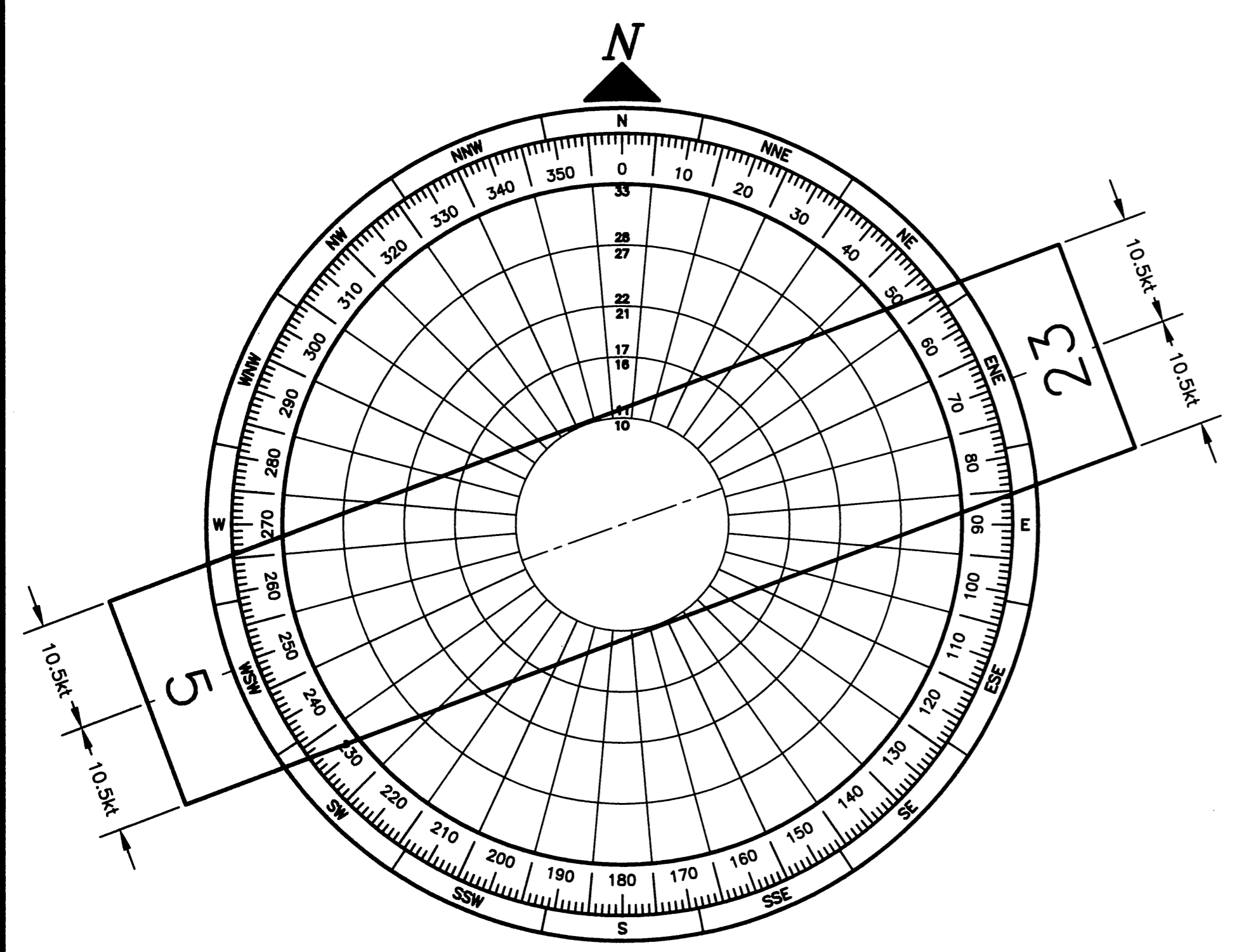


LEGEND		
ITEM	EXISTING	ULTIMATE
AIRPORT REFERENCE POINT (ARP)		
ANTENNA		
BLUFF		
BUILDINGS		
BUILDING RESTRICTION LINE (BRL)		
FENCE		
PAPI		
PROPERTY LINE		
REIL		
ROADWAYS		
ROTATING BEACON		
SHORELINE		
STREAM / STREAM BANK		
SURVEY MONUMENT		
THRESHOLD MARKERS/LIGHTS		
TOPOGRAPHIC CONTOURS		
TREE (LARGE SINGLE)		
TREELINE		
VASI		
WINDCONE		
WINDCONE AND SEGMENTED CIRCLE		

AIRPORT DATA		
ITEM	EXISTING	ULTIMATE
ICAO IDENTIFIER	NONE	
NATIONAL AIRPORT IDENTIFIER	SMU	
FAA SITE NUMBER	50698.*A	
AIRPORT ELEVATION NAVD88	2770.0'	
AIRPORT REFERENCE CODE	A-J	
MEAN MAX. TEMPERATURE, HOTTEST MONTH	68°F, JULY	
AIRPORT AND TERMINAL NAVIGATION AIDS	NONE	SAME AS EXISTING
TAXIWAY LIGHTING/MARKING	NONE	
OBSTRUCTION SURVEY SOURCE & TYPE	NONE	
MAGNETIC DECLINATION, YEAR, RATE OF CHANGE	19°42'E / 2011	-0°19'(W) / YEAR

GEOGRAPHIC COORDINATES TABLE				
ITEM	EXISTING LATITUDE	EXISTING LONGITUDE	ULTIMATE LATITUDE	ULTIMATE LONGITUDE
ARP	N61°48'41.00"	W147°30'33.00"	N61°48'41.00"	W147°30'33.00"
THRESHOLD RW 5	N61°48'36.68"	W147°30'54.70"	N61°48'36.68"	W147°30'54.70"
THRESHOLD RW 23	N61°48'44.54"	W147°30'10.47"	N61°48'44.54"	W147°30'10.47"

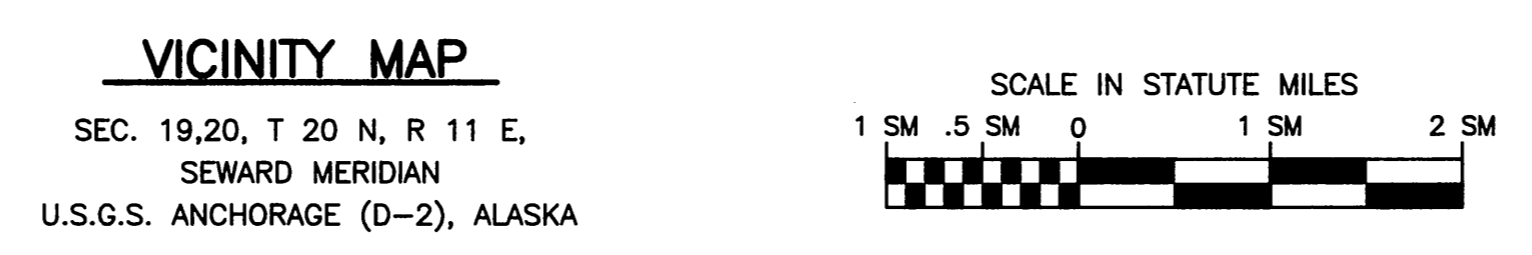
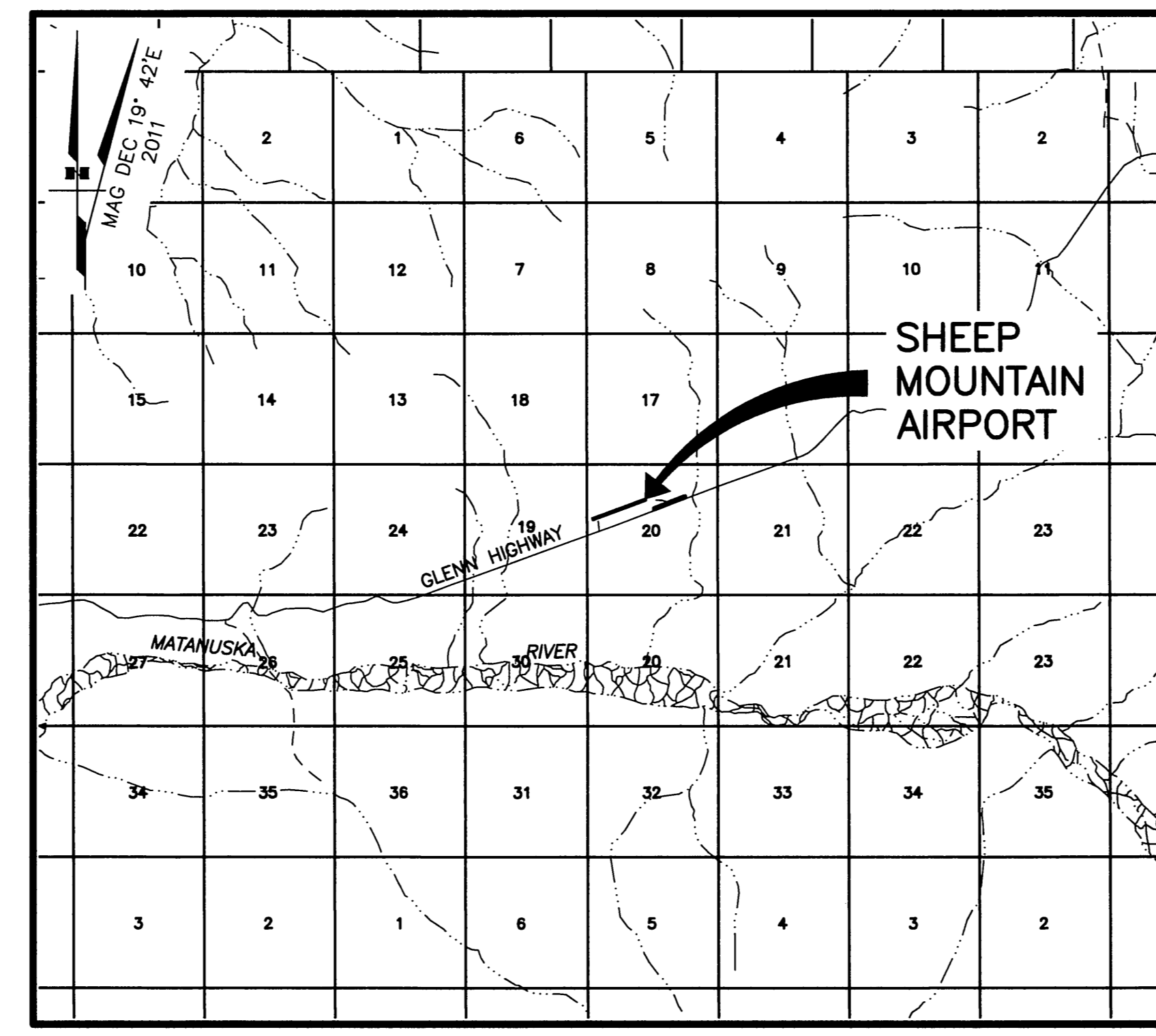
RUNWAY 5/23 DATA			
ITEM	EXISTING	NEAR-TERM	ULTIMATE
RUNWAY TYPE UTILITY OR OTHER THAN UTILITY	UTILITY		
FAR PART 77 APPROACH CATEGORY (V, NPI, P)	V / V		
APPROACH SURFACES	20:1 / 20:1		
VISIBILITY MINIMUM	1 SM		
RUNWAY SURFACE	GRAVEL		
PAVEMENT STRENGTH SW,DW,DTW,DDTW x1000lbs	N/A		
AIRCRAFT APPROACH CATEGORY	A		
AIRPLANE DESIGN GROUP	I		
MEAN GEODETIC BEARING	N69°24'54"E		
EFFECTIVE GRADE	0.97%		
TOUCHDOWN ZONE ELEVATION NAVD88 (ESTIMATED)	2769.0' / 2747.0'		
RUNWAY DIMENSIONS	60' x 2270'		
RUNWAY SAFETY AREA (RSA) DIMENSIONS	120' x 2750'		
LENGTH BEYOND R/W END	240' / 240'		
RUNWAY PROTECTION ZONE (RPZ) DIMENSIONS	250' x 450' x 1000'		
RUNWAY OBJECT FREE AREA (ROFA) DIMENSIONS	250' x 2750'		
LENGTH BEYOND R/W END OR STOPWAY	240' / 240'		
RUNWAY OBSTACLE FREE ZONE (ROFZ) DIMENSIONS	250' x 2670'		
RUNWAY LIGHTING	NONE		
RUNWAY MARKING TYPE	NONE		
RUNWAY VISUAL APPROACH AIDS	NONE		



NOTE: WIND DATA NOT AVAILABLE

WIND DATA TABLE				
RUNWAY	10.5 kt	13 kt	16 kt	20 kt
5/23				

SOURCE: NONE  
 PERIOD: NONE



**NOTES**

- NO PRIOR ALP EXISTS FOR SHEEP MOUNTAIN.
- THE INFORMATION SHOWN HEREON IS BASED ON A FIELD SURVEY PERFORMED BY DOWL HKM ON JUNE 17, 2010.
- THE HORIZONTAL DATUM IS NAD83(CORS96) (EPOCH:2003.0000) AS DETERMINED BY STATIC GPS OBSERVATIONS USING LEICA DUAL FREQUENCY GPS RECEIVERS AND PROCESSED USING THE NGS OPUS UTILITY. CONTROL CORS STATIONS USED FOR THE POSITION SOLUTION WERE AB15, KEN5 AND TLKA.
- ELEVATIONS ARE NAV88 ORTHOMETRIC HEIGHTS DETERMINED BY GPS OBSERVATIONS AND A HIGH RESOLUTION MODEL, GEIOD-99.
- THRESHOLD COORDINATES WERE DETERMINED USING A STATIC GPS NETWORK. THE TOPOGRAPHIC MAPPING IN THE AIRPORT VICINITY WAS DIGITIZED FROM U.S.G.S. QUAD ANCHORAGE (D-2).

DRAWING INDEX	
SHT #	TITLE
1	DATA
2	EXISTING LAYOUT
3	AIRPORT AIRSPACE, 14 CFR, PART 77

BY: DATE: REVISION:	APPROVED: DATE: 6-27-2013
KENNETH M. MORTON, P.E. PRECONSTRUCTION ENGINEER	RECOMMENDED: DATE: 6-26-13
WOLFGANG E. JUNGE, P.E. DESIGN SECTION CHIEF	

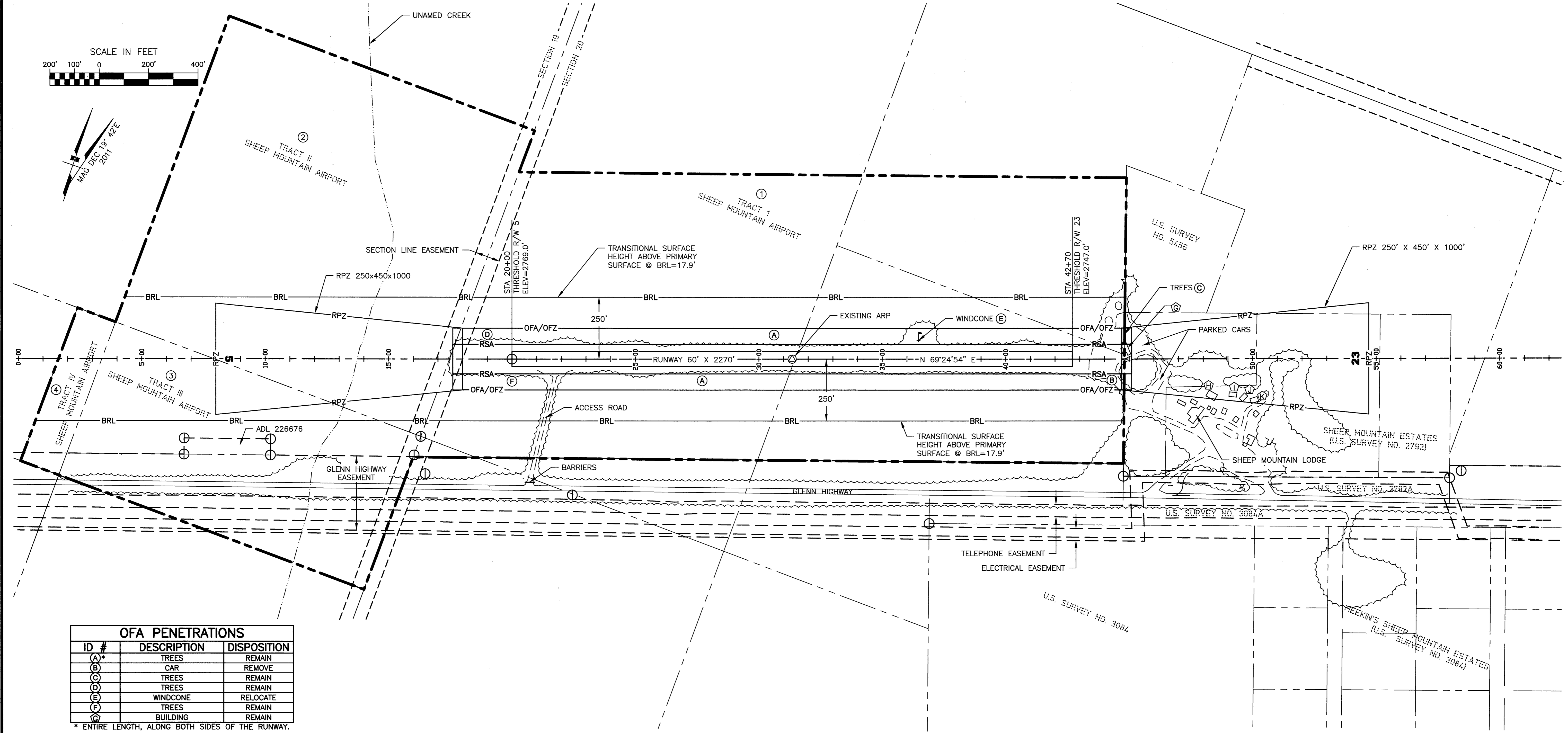
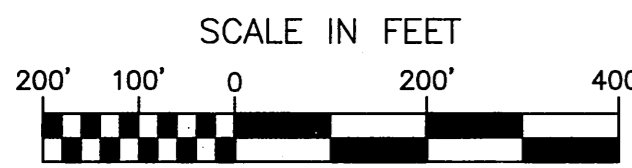
  

STATE OF ALASKA DEPARTMENT OF TRANSPORTATION AND PUBLIC FACILITIES CENTRAL REGION	
SHEEP MOUNTAIN AIRPORT SHEEP MOUNTAIN, ALASKA AIRPORT LAYOUT PLAN	
DATE: 09/18/2012	SHEET: 1 OF 3

AIRPORT LAYOUT PLAN CONDITIONAL APPROVAL SUBJECT TO ALP APPROVAL LETTER DATED 7/8/2013 FAA AIRSPACE REVIEW NUMBER: 2011-AL-300-NKA	
DATE: 7-8-13	FAA, AIRPORTS DIVISION ALASKAN REGION, AAL-1024

Date Plotted: 8/04/2013, 7:50 AM  
 Layout Name: W:\Projects\Sheep Mountain\ALP\Final Drawings\ALP - EXISTING LAYOUT.dwg  
 File Name:  
 Designed By: nilevelyn  
 Drawn By: rbrvant  
 Checked By: blanson  
 FILE No.: 232-101-2



OFA PENETRATIONS		
ID #	DESCRIPTION	DISPOSITION
(A)*	TREES	REMAIN
(B)	CAR	REMOVE
(C)	TREES	REMAIN
(D)	TREES	REMAIN
(E)	WINDCONE	RELOCATE
(F)	TREES	REMAIN
(G)	BUILDING	REMAIN

\* ENTIRE LENGTH, ALONG BOTH SIDES OF THE RUNWAY.

OFZ PENETRATIONS		
ID #	DESCRIPTION	DISPOSITION
(A)*	TREES	REMAIN
(B)	CAR	REMOVE
(C)	TREES	REMAIN
(D)	TREES	REMAIN
(E)	WINDCONE	RELOCATE
(F)	TREES	REMAIN
(G)	BUILDING	REMAIN

\* ENTIRE LENGTH, ALONG BOTH SIDES OF THE RUNWAY.

BUILDING DATA TABLE				
ID #	DESCRIPTION	STATION/OFFSET	TOP ELEV (NAVD88)	OBSTRUCT MARKING
(G)*	BUILDING	44+70/ 23' LT	2765.0'	NONE
(H)	BUILDING	48+34/148' RT	NONE AVAILABLE	NONE
(I)	BUILDING	49+20/144' RT	NONE AVAILABLE	NONE
(J)	BUILDING	49+63/155' RT	NONE AVAILABLE	NONE
(K)	BUILDING	50+06/167' RT	NONE AVAILABLE	NONE

\* BUILDING MAY ENCROACH RSA AND AIRPORT PROPERTY.

PROPERTY STATUS							
ID #	INTEREST	GRANTOR	ASSIGNEE	PARCEL SIZE	DATE ACQUIRED	RECORDED DOC NO.	ACQUIRED AIP NO.
(1)	I.L.M.A.	STATE OF ALASKA, DNR	STATE OF ALASKA, DOT & PF	70.7± ac	03-09-1999	BK 1002 PG 828	1-26-1972
(2)	I.L.M.A.	STATE OF ALASKA, DNR	STATE OF ALASKA, DOT & PF	40.0± ac	03-09-1999	BK 1002 PG 828	
(3)	I.L.M.A.	STATE OF ALASKA, DNR	STATE OF ALASKA, DOT & PF	20.0± ac	03-09-1999	BK 1002 PG 828	
(4)	I.L.M.A.	STATE OF ALASKA, DNR	STATE OF ALASKA, DOT & PF	2.5± ac	03-09-1999	BK 1002 PG 828	

- NOTES:
- TOPOGRAPHIC CONTOURS NOT AVAILABLE.
  - RESIDENCES WITHIN RW END 23 RPZ TO REMAIN.
  - BUILDING LOCATIONS APPROXIMATED PER 2010 AERIAL IMAGERY.

BY	DATE	REVISION

**STATE OF ALASKA**  
**DEPARTMENT OF TRANSPORTATION**  
**AND PUBLIC FACILITIES**  
**CENTRAL REGION**

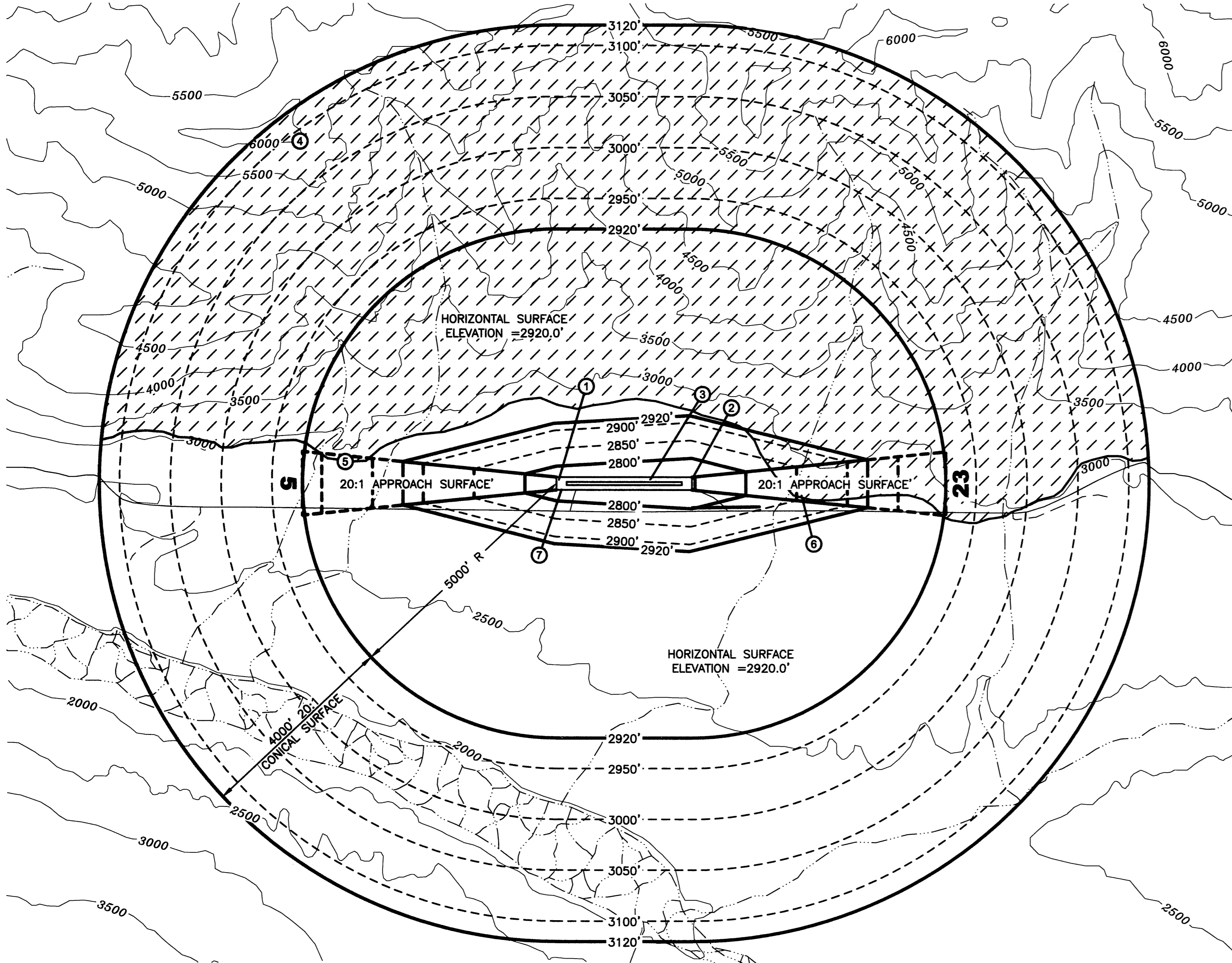
**SHEEP MOUNTAIN AIRPORT**  
 SHEEP MOUNTAIN, ALASKA  
 AIRPORT LAYOUT PLAN  
 EXISTING LAYOUT

DATE:	08/14/2012
SHEET:	2
OF	3

FILE No.: 232-101-4

Designed By: mlw/jlw  
 Drawn By: rbr/vnt  
 Checked By: bhrson

Date Plotted: 5/04/2013, 7:52 AM  
 Layout Name: P77 (3)  
 File Name: W:\Projects\Sheep Mountain\ALP\Final Drawings\ALP-COVER & P77.dwg



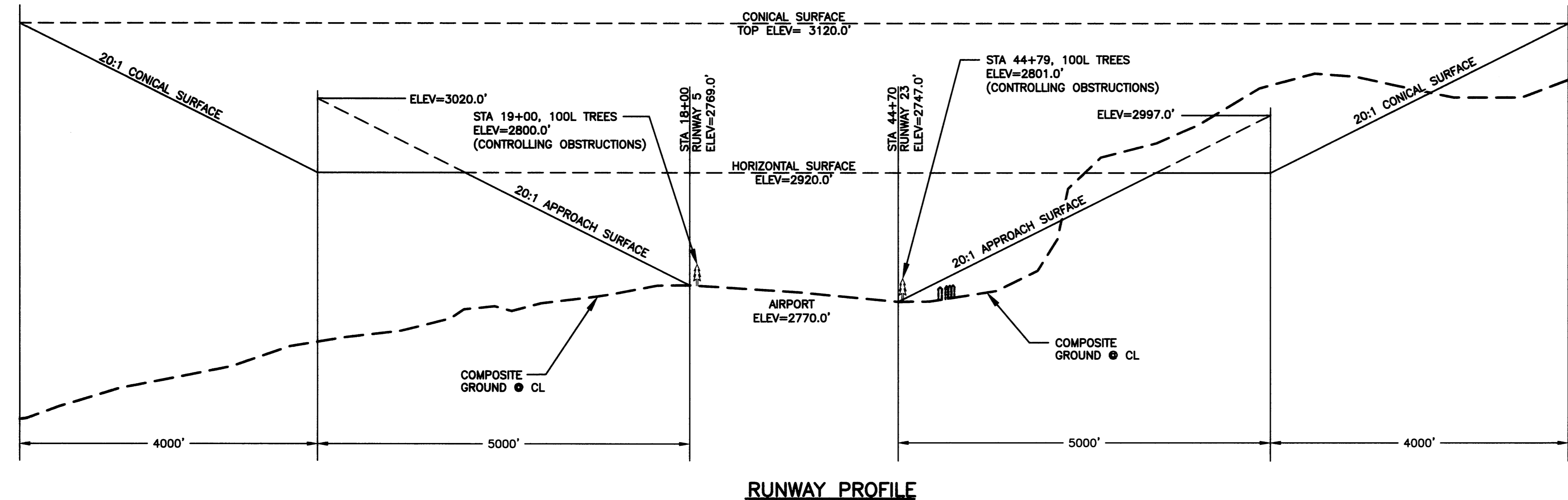
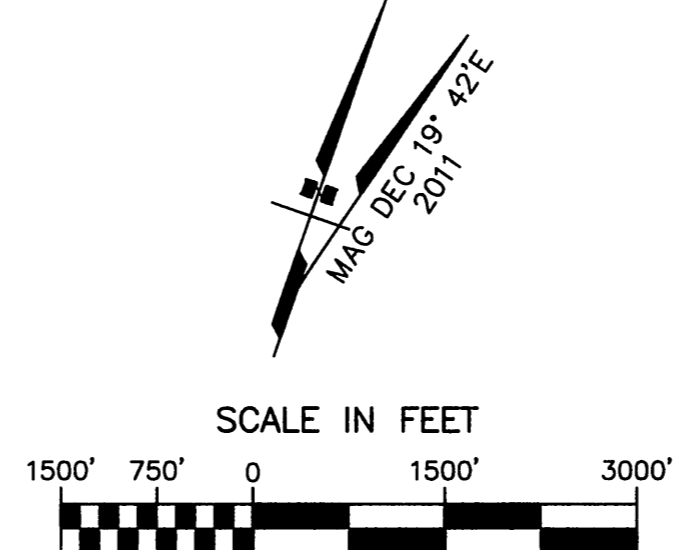
**RUNWAY 5/23**  
**PART 77 SURFACE OBSTRUCTION TABLE**

ID #	DESCRIPTION	STATION/OFFSET	ELEVATION	SURFACE PENETRATED	SURFACE ELEVATION	AMOUNT PENETRATION	DISPOSITION	STAGE TO CORRECT
1	TREES	19+00/100L	2800.0'	PRIMARY	2770.0'	31	REMAIN	
2	TREES	44+79/100L	2801.0'	APPROACH	2747.0'	54	REMAIN	
3	WINDCONE	36+47/75L	2788.0'	PRIMARY	2770.0'	18	RELOCATE	
4*	TERRAIN	-32+50/6720L	6000.0'	CONICAL	3100.0'	2900	REMAIN	
5	TERRAIN	-23+50/425L	2950.0'	TRANSITIONAL	2920.0'	30	REMAIN	
6	TERRAIN	65+60/280R	2875.0'	TRANSITIONAL	2850.0'	25	REMAIN	
7	TREES	20+00/120R	278.3'	PRIMARY	2761.0'	22	REMAIN	

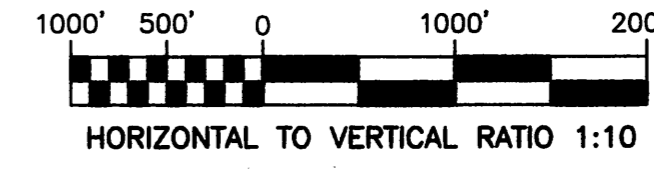
\* HIGHEST POINT IN LARGE AREA OF TERRAIN PENETRATION.

**NOTES**

- AIRPORT ELEVATION IS 2770.0'.
- ALL THE CONTOURS FOR AIRPORT AIRSPACE, 14 CFR, PART 77 SHEET ARE IN FEET. CONTOUR DATA IS FROM USGS QUAD ANCHORAGE (D-2). USGS DATUM IS WGS84.
- PRIMARY SURFACE WIDTH IS 250'.
- A RANGE FINDER WITH A BUILT-IN INCLINOMETER WAS USED TO IDENTIFY OBSTRUCTIONS CLOSE TO THE RUNWAY IN THE PRIMARY AND TRANSITIONAL SURFACES.
- APPROACH SURFACES ARE 20:1 BEGINNING AT 200 FEET BEYOND THE THRESHOLDS.
- THE RUNWAY 5 CONTROLLING OBSTRUCTION IS A GROUP OF TREES AT STATION 19+00, 100L. THE OBSTRUCTION CLEARANCE SLOPE IS ESTABLISHED AS 3:1, PER FAA AC 150-5200-35A, CHAPTER 4, DATA ELEMENT NUMBER 57.
- THE RUNWAY 23 CONTROLLING OBSTRUCTION IS A GROUP OF TREES AT STATION 44+79, 100L. THE OBSTRUCTION CLEARANCE SLOPE IS ESTABLISHED AS 3:1, PER FAA AC 150-5200-35A, CHAPTER 4, DATA ELEMENT NUMBER 57.
- THE RUNWAY 5 THRESHOLD SITING SURFACES DO NOT MEET ANY THRESHOLD SITING CRITERIA BECAUSE OF TREE PENETRATIONS, AS DEFINED IN FAA AC 150/5300-13, CHG 1B, APPENDIX 2, TABLE A2-1.
- THE RUNWAY 23 THRESHOLD SITING SURFACES DO NOT MEET ANY THRESHOLD SITING CRITERIA BECAUSE OF TREE PENETRATIONS, AS DEFINED IN FAA AC 150/5300-13, CHG 1B, APPENDIX 2, TABLE A2-1.
- THERE ARE NO KNOWN ORDINANCES OR STATUTES IN EFFECT THAT SPECIFY HEIGHT RESTRICTIONS.
- THERE ARE NO LANDFILLS OR SEWAGE LAGOONS WITHIN 10,000' OF THE RUNWAY.



**RUNWAY PROFILE**



BY	DATE	REVISION
<b>STATE OF ALASKA DEPARTMENT OF TRANSPORTATION AND PUBLIC FACILITIES CENTRAL REGION</b>		
<b>SHEEP MOUNTAIN AIRPORT</b>		DATE: 09/18/2012
SHEEP MOUNTAIN, ALASKA		SHEET: 3 OF 3
AIRPORT AIRSPACE		
14 CFR, PART 77		