

## **5. Exhibits**

---

**Exhibit A. Ketchikan Bar Harbor Electrical Sheets 29-34**

**Exhibit B. Petersburg Harbor Electrical Sheets 40-46**

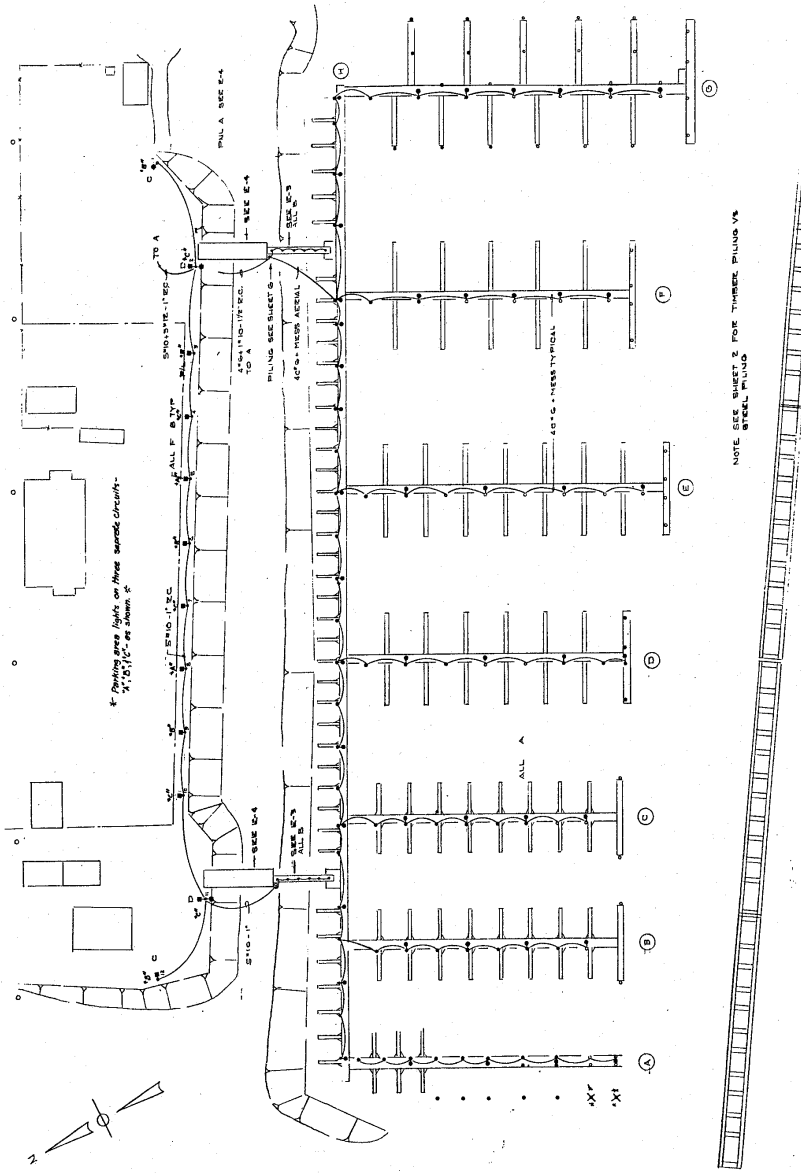
**Exhibit C. 3-Phase Crossarm Construction Dead End (Single)**

**Exhibit D. Grounding Assembly-Ground Rod Type**

**5.1. Exhibit A. Ketchikan Bar Harbor Electrical Sheets 29-34**

EXHIBIT A

TYPE	WATTAGE	FIXTURE SCHEDULE	WATTAGE
A	4000 MAINE	210-C-100-100	100 HPS SEE DETAIL E-3
B	4000 MAINE	210-C-100-100	100 HPS SEE DETAIL E-3
C	4000 MAINE	210-C-100-100	100 HPS SEE DETAIL E-3
D	4000 MAINE	210-C-100-100	100 HPS SEE DETAIL E-3
E	4000 MAINE	210-C-100-100	100 HPS SEE DETAIL E-3
F	4000 MAINE	210-C-100-100	100 HPS SEE DETAIL E-3



- SYMBOLS
- ⊙ METER
  - ⊙ PHOTO-ELECTRIC
  - ⊙ JUNCTION
  - ⊙ MOTOR
  - ⊙ SWITCH - 48"
  - ⊙ RECEPTACLE
  - ⊙ THERMOSTAT
  - ⊙ SPECIAL OUTLET
  - ⊙ WIRING CHASE OR IN CONDUIT
  - ⊙ ON TRENCH
  - ⊙ LIGHT FIXTURE
- NOTES
- ⊙ MOTOR SITE NOTED
  - ⊙ MAGNETIC STARTER WITH PUMP, INST BY ELEC
  - ⊙ EXISTING
  - ⊙ USA
  - ⊙ HAND OFF AUTOMATIC
  - ⊙ 5-W
  - ⊙ LIGHTING BID 501 (1)
  - ⊙ POWER 50 (13)
  - ⊙ US COAST GUARD NO 801 (3)

DO NOT SCALE THIS DRAWING - USE DIMENSIONS

DEPARTMENT OF TRANSPORTATION AND PUBLIC FACILITIES  
 DIVISION OF AIRBORNE DESIGN AND CONSTRUCTION

11/87/4

**LIGHTING PLAN**

BY: **Robert P. Dece**

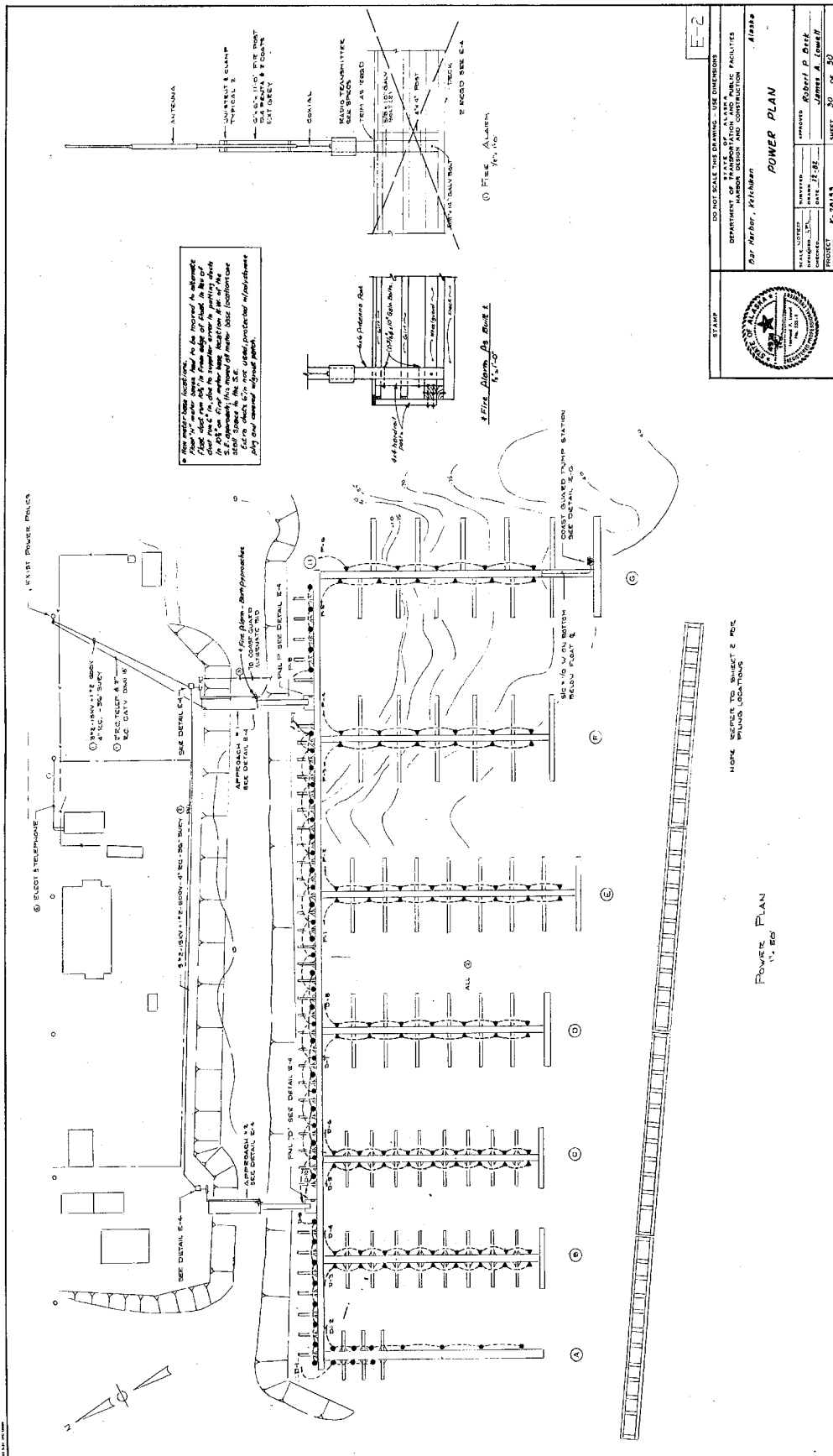
DATE: **11-28-87**

PROJECT: **Robert P. Dece**

CHECKED: **James A. Green**

NUMBER: **K-70113**

SHEET: **29** OF **50**



Note: This location is to be moved to alternate floor level per 2017 code. In the event of a fire, the fire alarm system shall be tested in accordance with the manufacturer's instructions. The fire alarm system shall be tested in accordance with the manufacturer's instructions. The fire alarm system shall be tested in accordance with the manufacturer's instructions.

E-2

DO NOT SCALE THIS DRAWING - USE DIMENSIONS

DEPARTMENT OF STATE OF ALASKA PUBLIC FACILITIES  
HARBOR DESIGN AND CONSTRUCTION

027 INDIAN, AKHAKAN

POWER PLAN

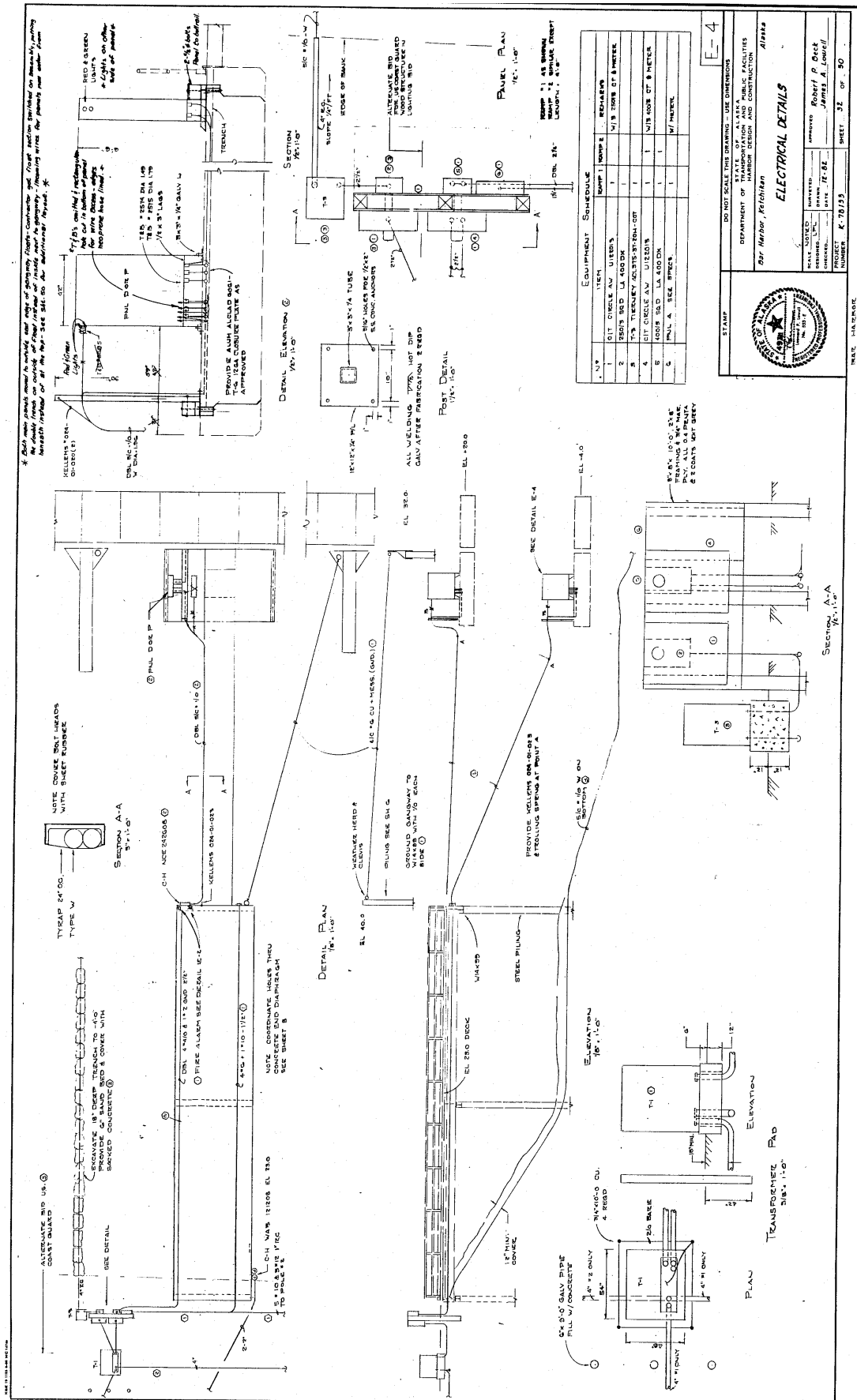
DESIGNED BY: Robert P. Beck  
CHECKED BY: James A. Loney  
DATE: 11-08  
PROJECT NUMBER: K-76193

SHEET 30 OF 50

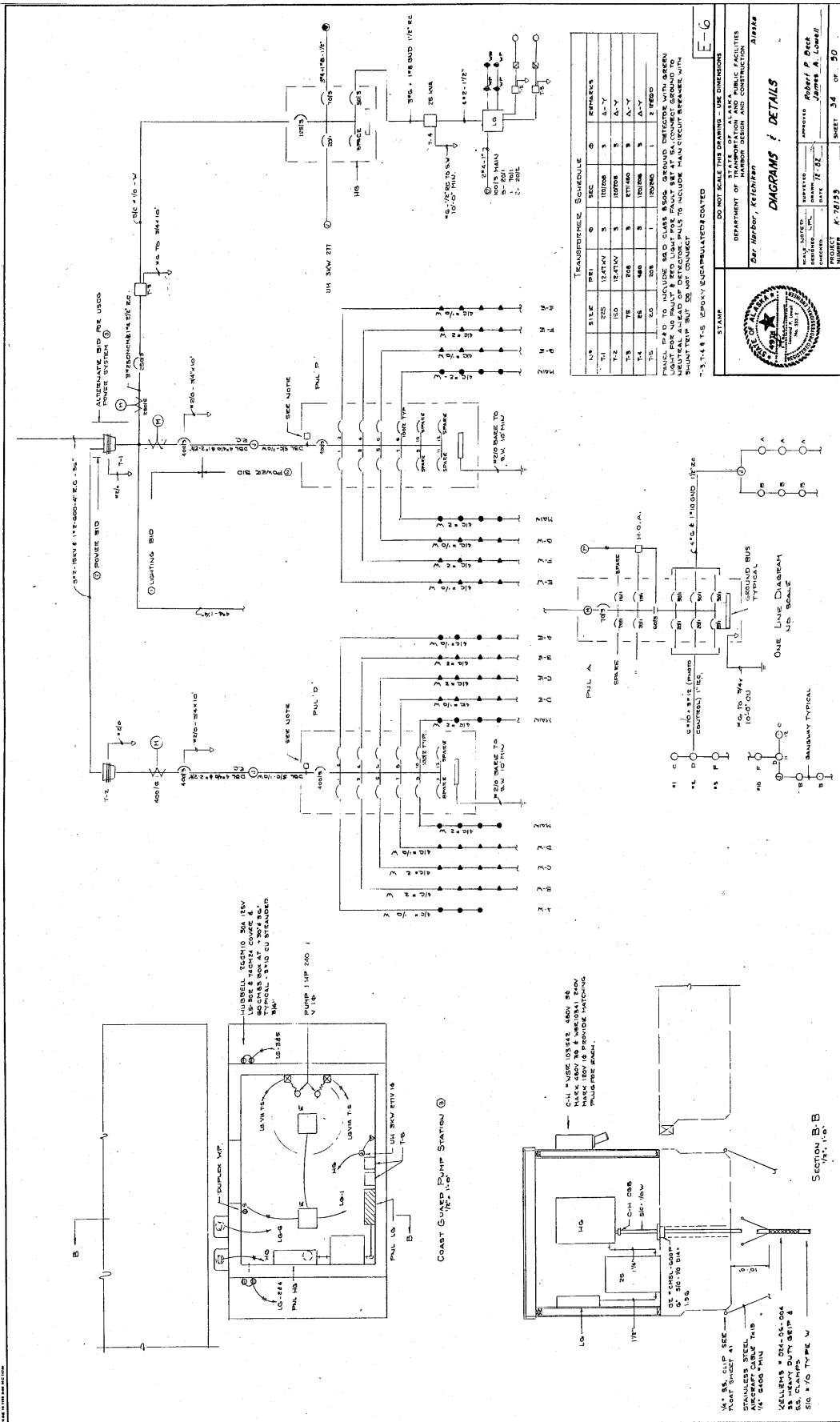
NOTE REFER TO SHEET E-01E  
 WINDUC LOCATIONS

POWER PLAN  
 1/2" = 1'-0"





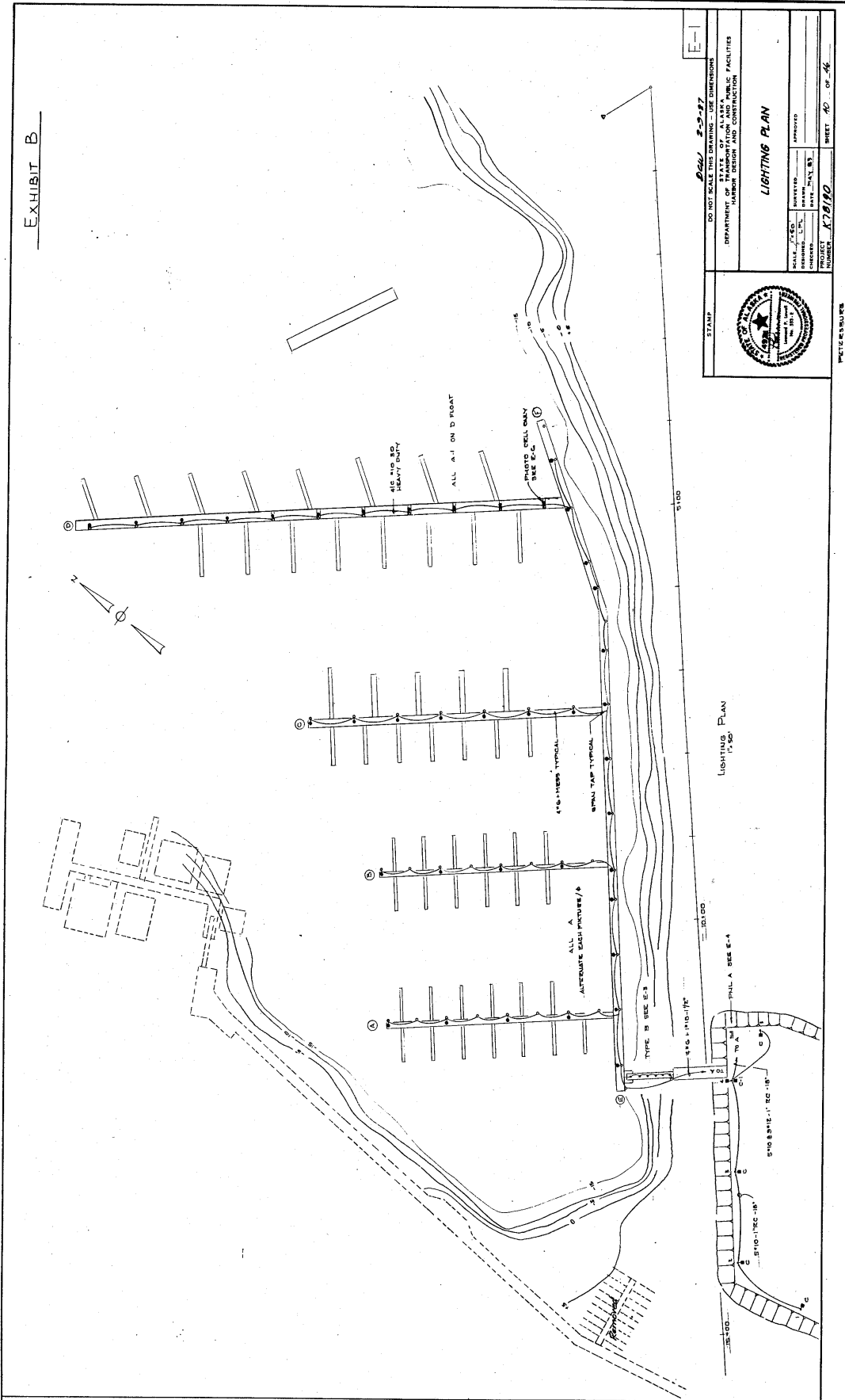






**5.2. Exhibit B. Petersburg Harbor Electrical Sheets 40-46**

EXHIBIT B



STAMP

DO NOT SCALE THIS DRAWING - USE DIMENSIONS

DATE: 2-5-97

PROJECT: ALASKA HARBOR ELECTRICAL GUIDELINES

DEPARTMENT OF PUBLIC WORKS

HARBOR DESIGN AND CONSTRUCTION

PROJECT: LIGHTING PLAN

DESIGNED BY: [Name]

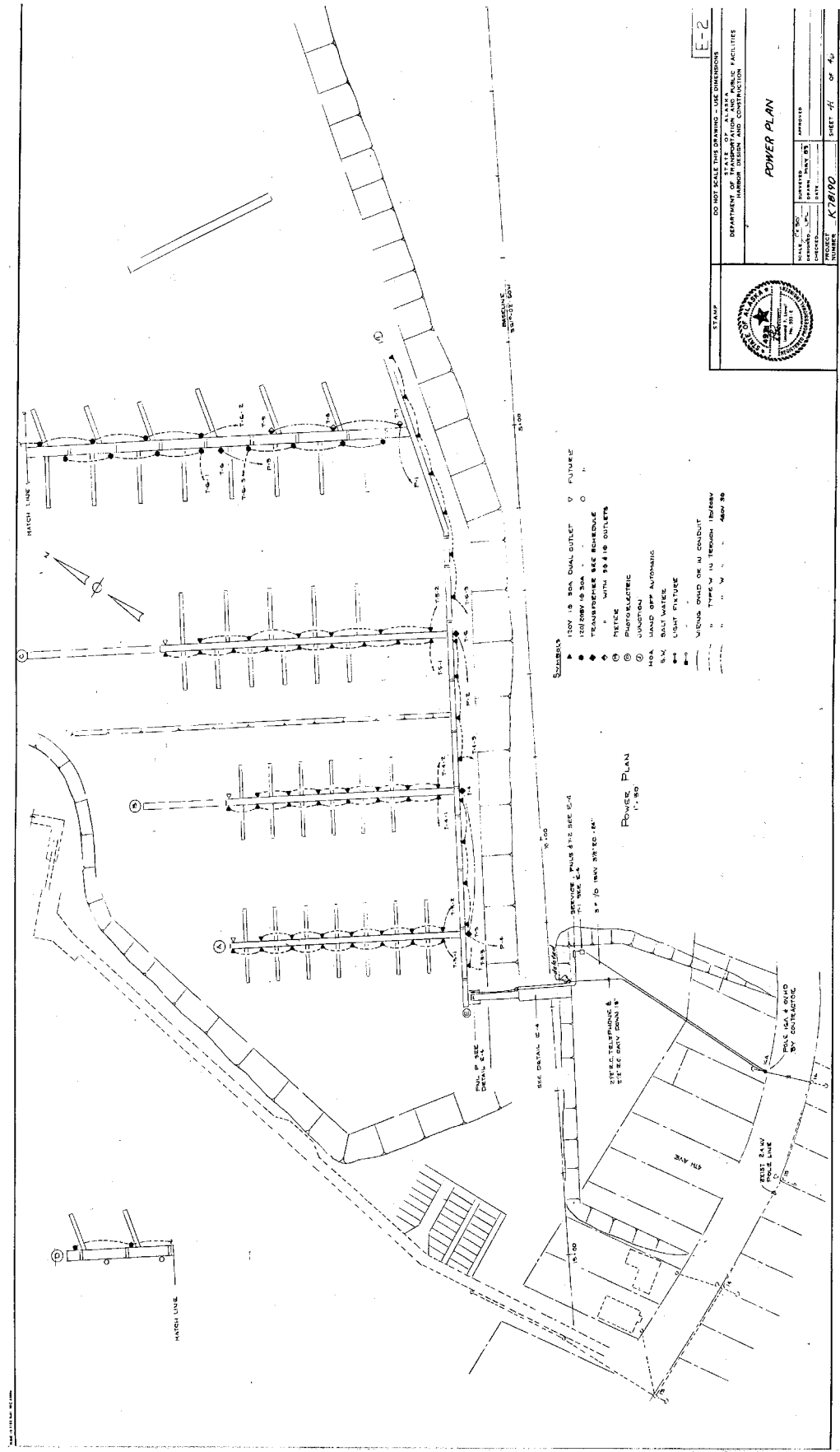
CHECKED BY: [Name]

DATE: [Date]

PROJECT: K78180

SHEET: AD OF 46

SCALE: 1" = 100'

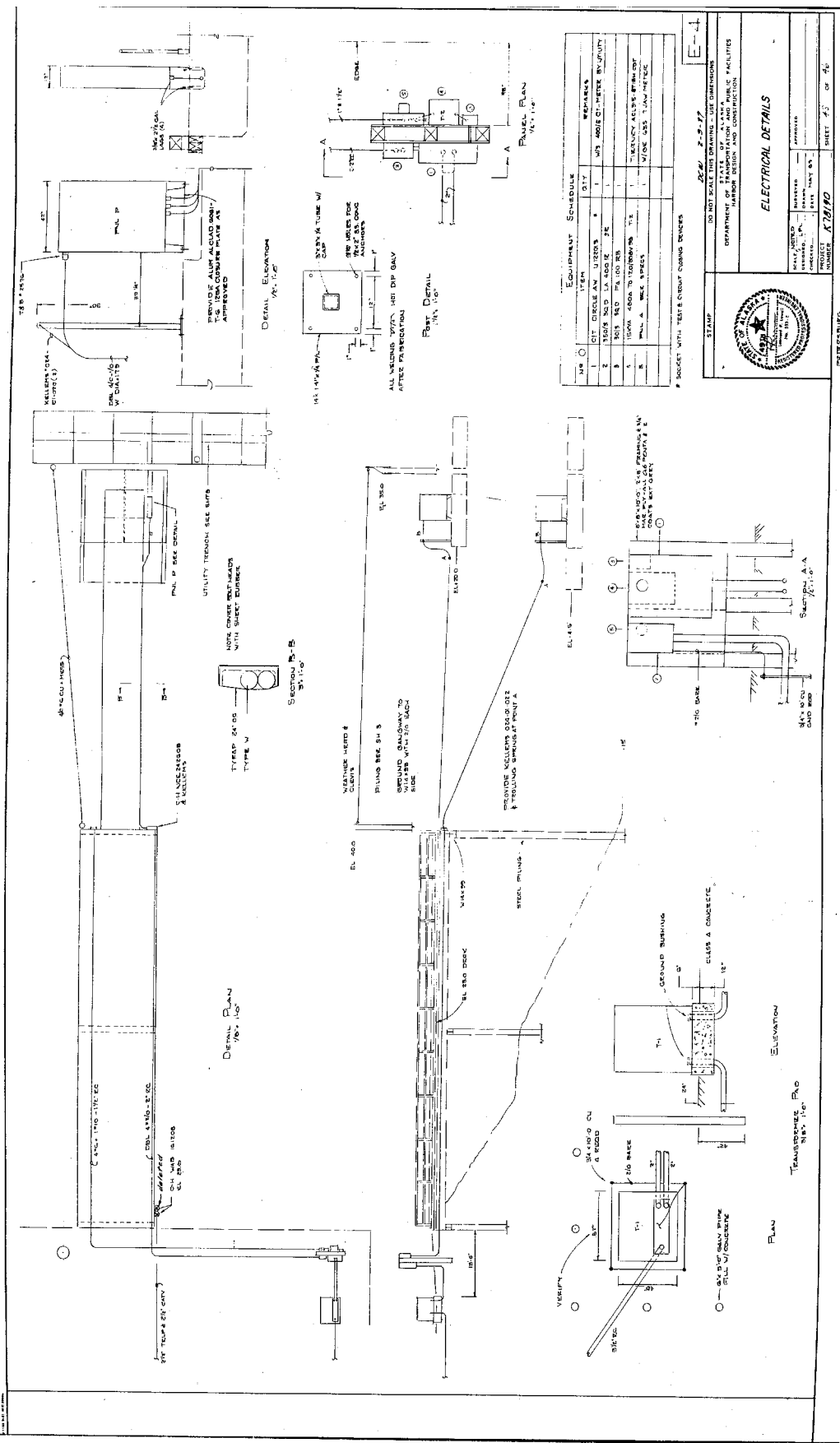


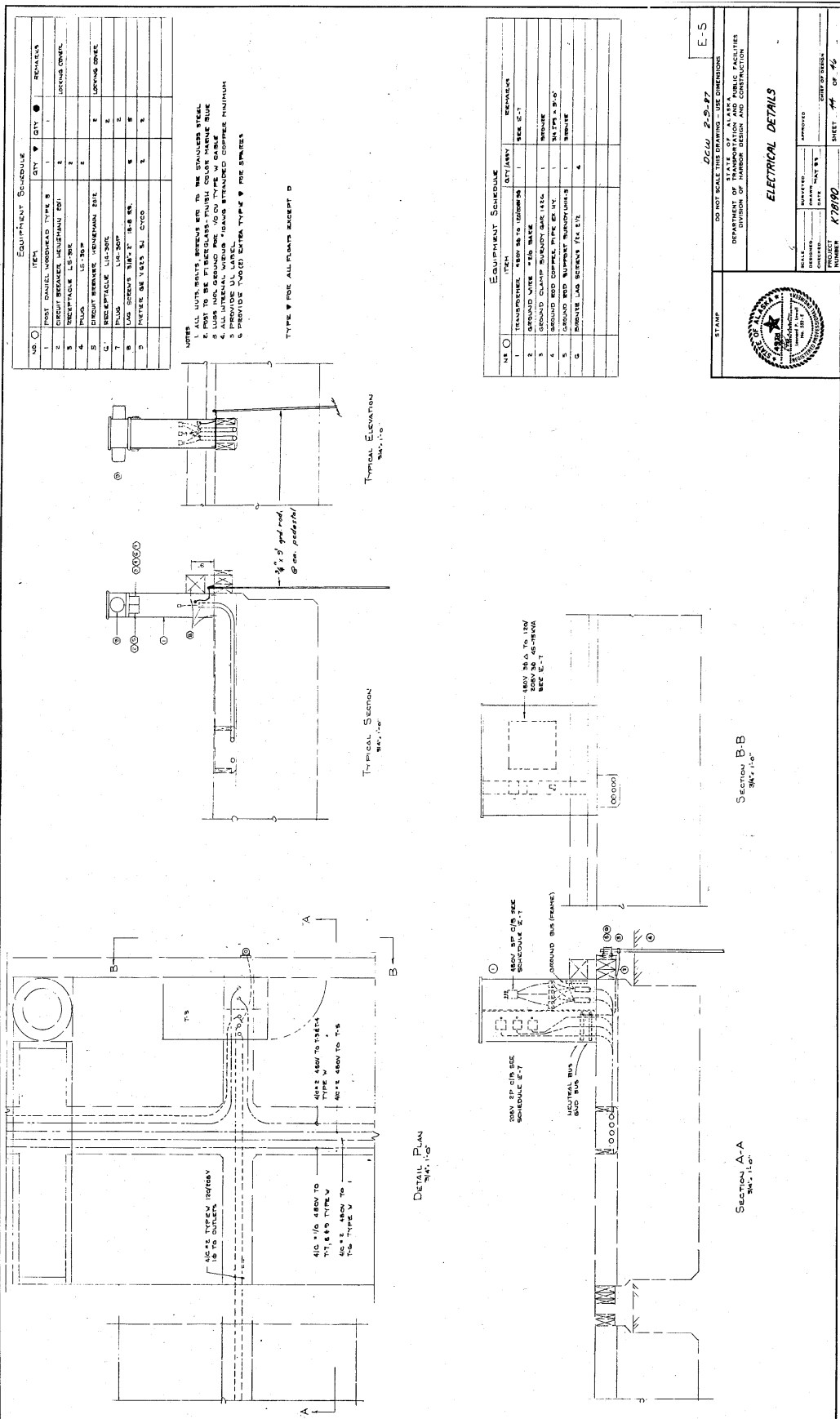
DO NOT SCALE THIS DRAWING - USE DIMENSIONS			
E-2			
DEPARTMENT OF STATE OF ALASKA HARBOR DESIGN AND CONSTRUCTION			
<b>POWER PLAN</b>			
DATE	BY	CHECKED	INDEXED
JULY 20, 1990	W. J. BROWN	W. J. BROWN	K78190
PROJECT			SHEET #1 OF #6

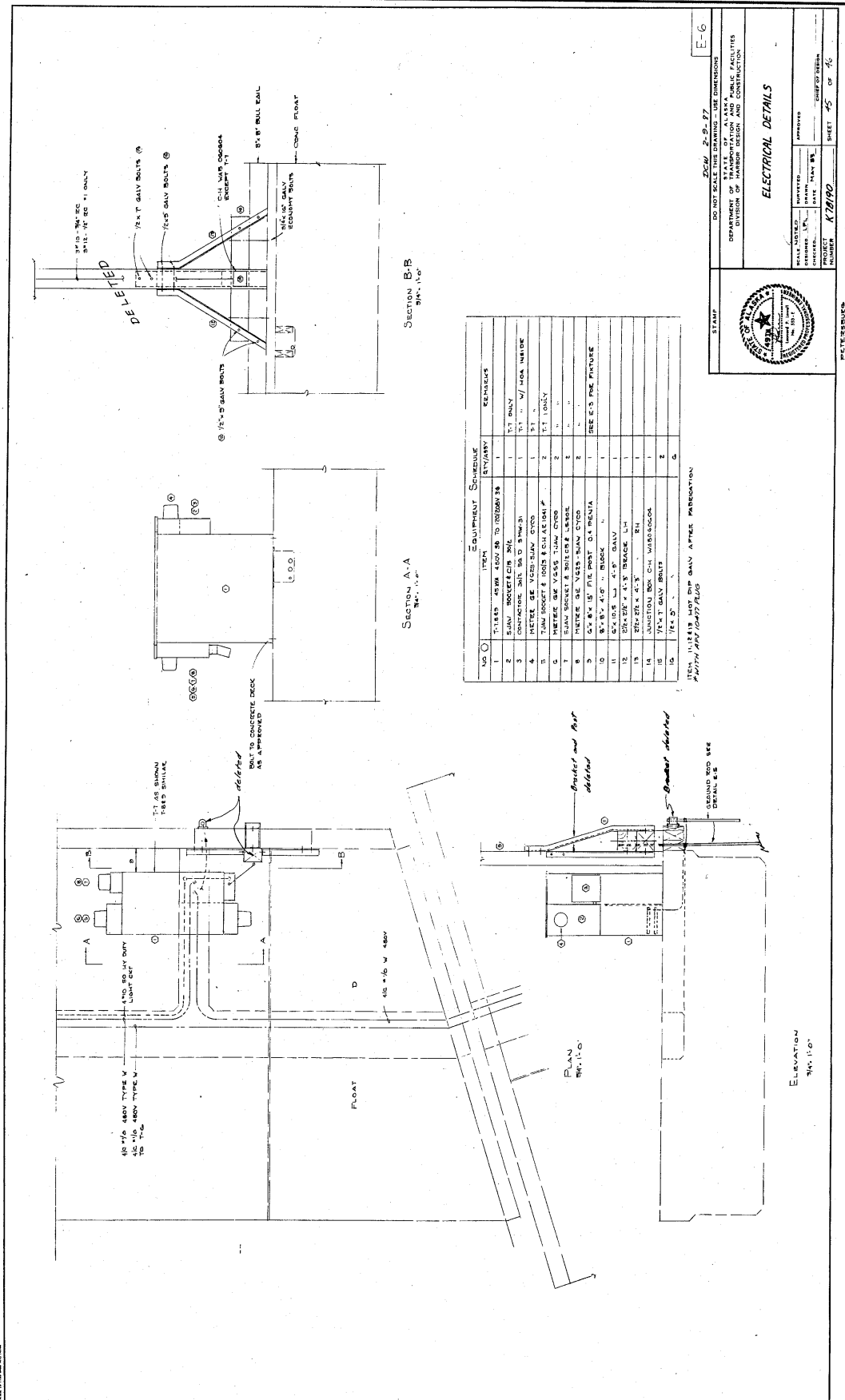


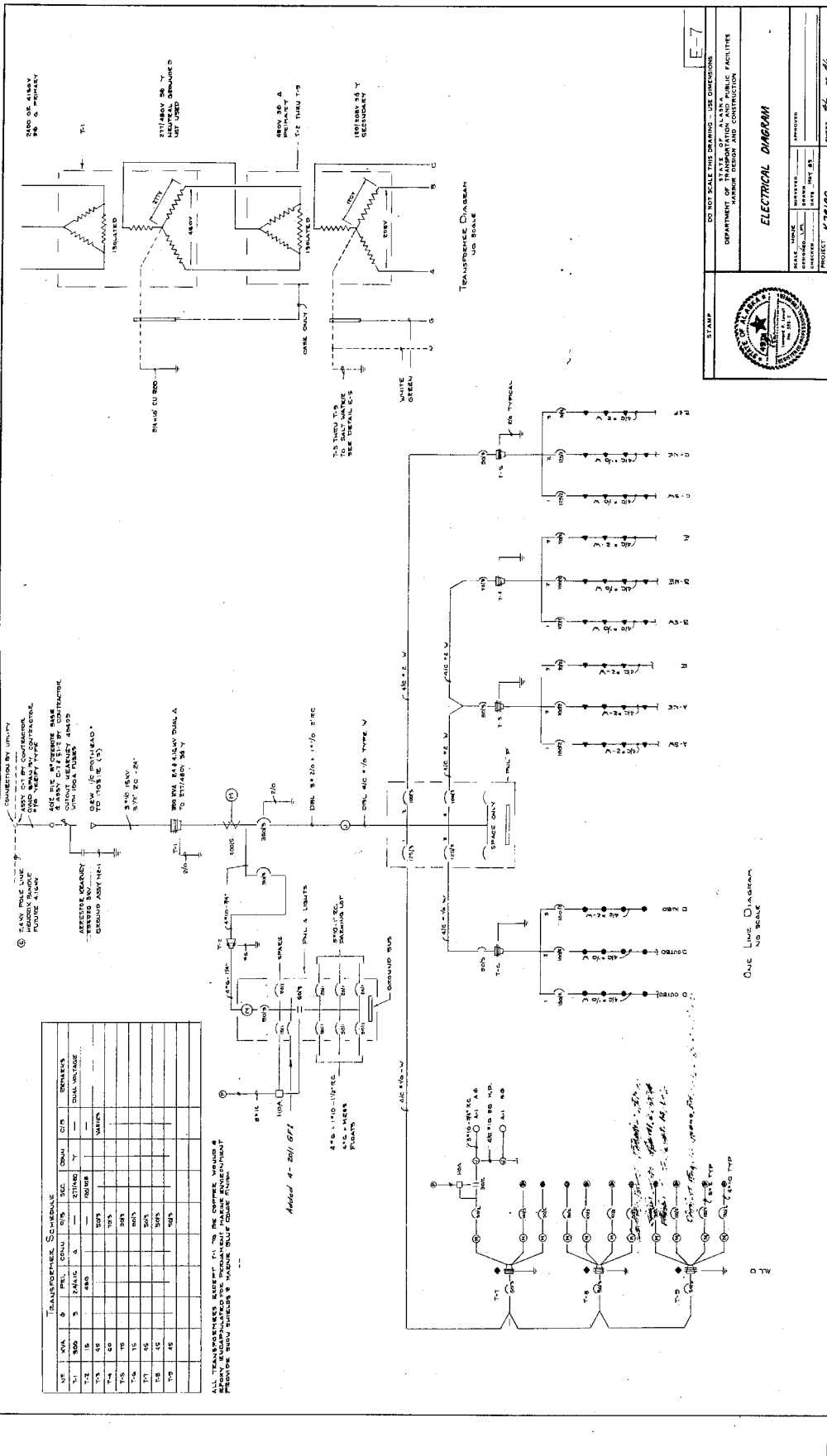
W. J. BROWN





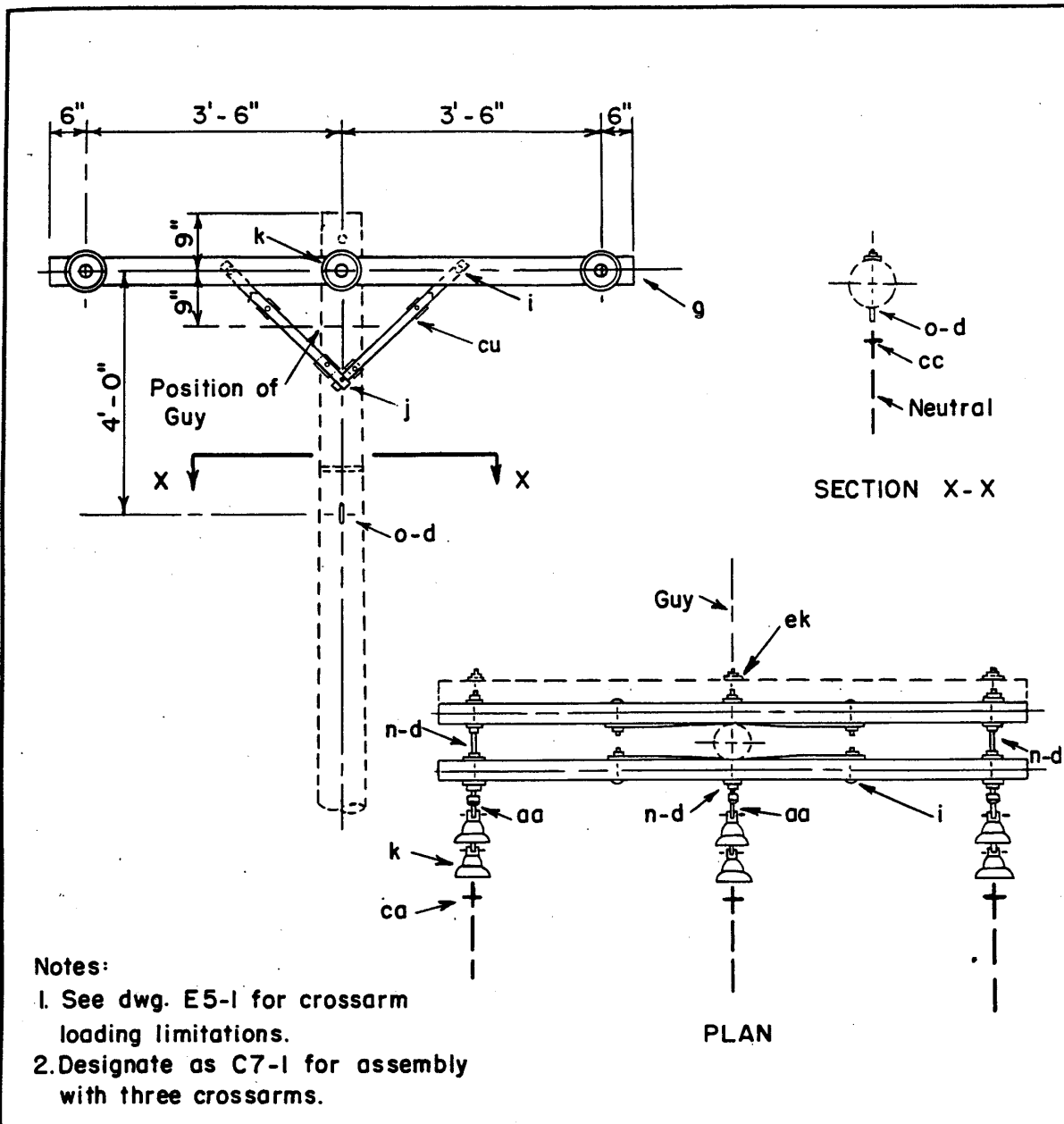








### **5.3. Exhibit C. 3-Phase Crossarm Construction Dead End (Single)**

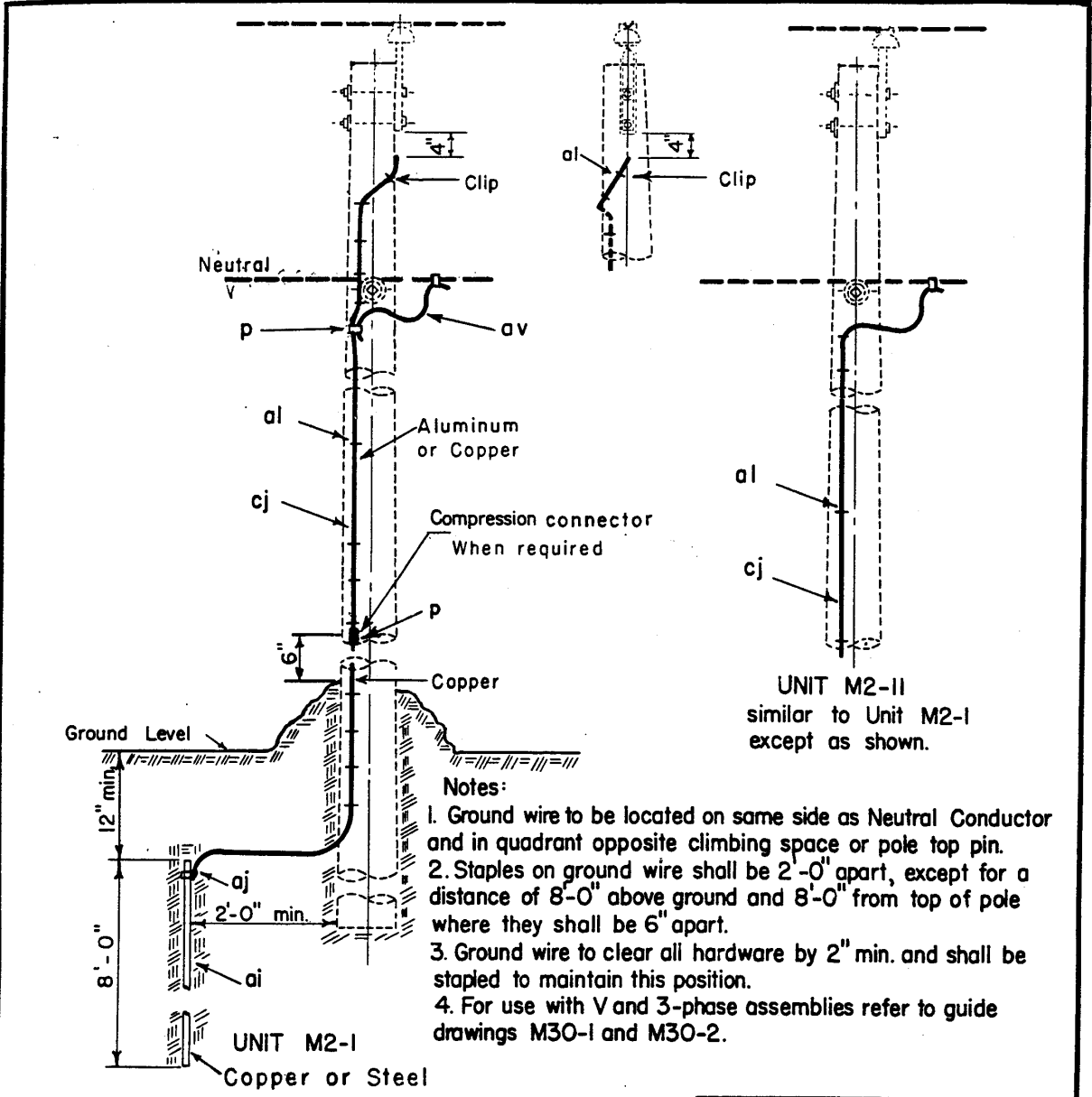


ITEM NO.	MATERIAL	ITEM NO.	MATERIAL
d 11	Washer, 2 1/4" x 2 1/4" x 3/16", 13/16" hole	n 3	Bolt, double arming, 5/8" x req'd l'gth
g 2	Crossarm, 3 1/2" x 4 1/2" x 8'-0"	o 1	Bolt, eye, 5/8" x req'd length
cu 4	Brace, wood, 28"	aa 3	Nut, eye, 5/8"
i 4	Bolt, carriage, 3/8" x 4 1/2"	ca 3	Deadend assembly, Primary
j 2	Screw, lag, 1/2" x 4"	cc 1	Deadend assembly, Neutral
k 6	Insulator, suspension	ek	Locknuts

7.2/12.5 KV.  
3-PHASE CROSSARM CONSTRUCTION  
DEAD END (SINGLE)

Jan 1, 1962 **C7,C7-1**

#### **5.4. Exhibit D. Grounding Assembly-Ground Rod Type**



- Notes:**
1. Ground wire to be located on same side as Neutral Conductor and in quadrant opposite climbing space or pole top pin.
  2. Staples on ground wire shall be 2'-0" apart, except for a distance of 8'-0" above ground and 8'-0" from top of pole where they shall be 6" apart.
  3. Ground wire to clear all hardware by 2" min. and shall be stapled to maintain this position.
  4. For use with V and 3-phase assemblies refer to guide drawings M30-1 and M30-2.

UNIT M2-II  
similar to Unit M2-I  
except as shown.

ITEM	MATERIAL	ASSEMBLY UNIT	
		M2 - I	M2 - II
p	Connectors	as req'd.	
ai	Rod, ground, 5/8" minimum diameter		
aj	Clamp, ground rod		
al	Staples, ground wire	as req'd.	as req'd.
al	Ground wire clip		
cj	Ground wire, No. 6 copper or equiv. conductivity	as req'd.	as req'd.
av	Jumper, stranded, No. 6 copper or equiv. conductivity	as req'd.	
<b>GROUNDING ASSEMBLY - GROUND ROD TYPE</b>			
Apr. 1969		<b>M2-I, M2-II</b>	

