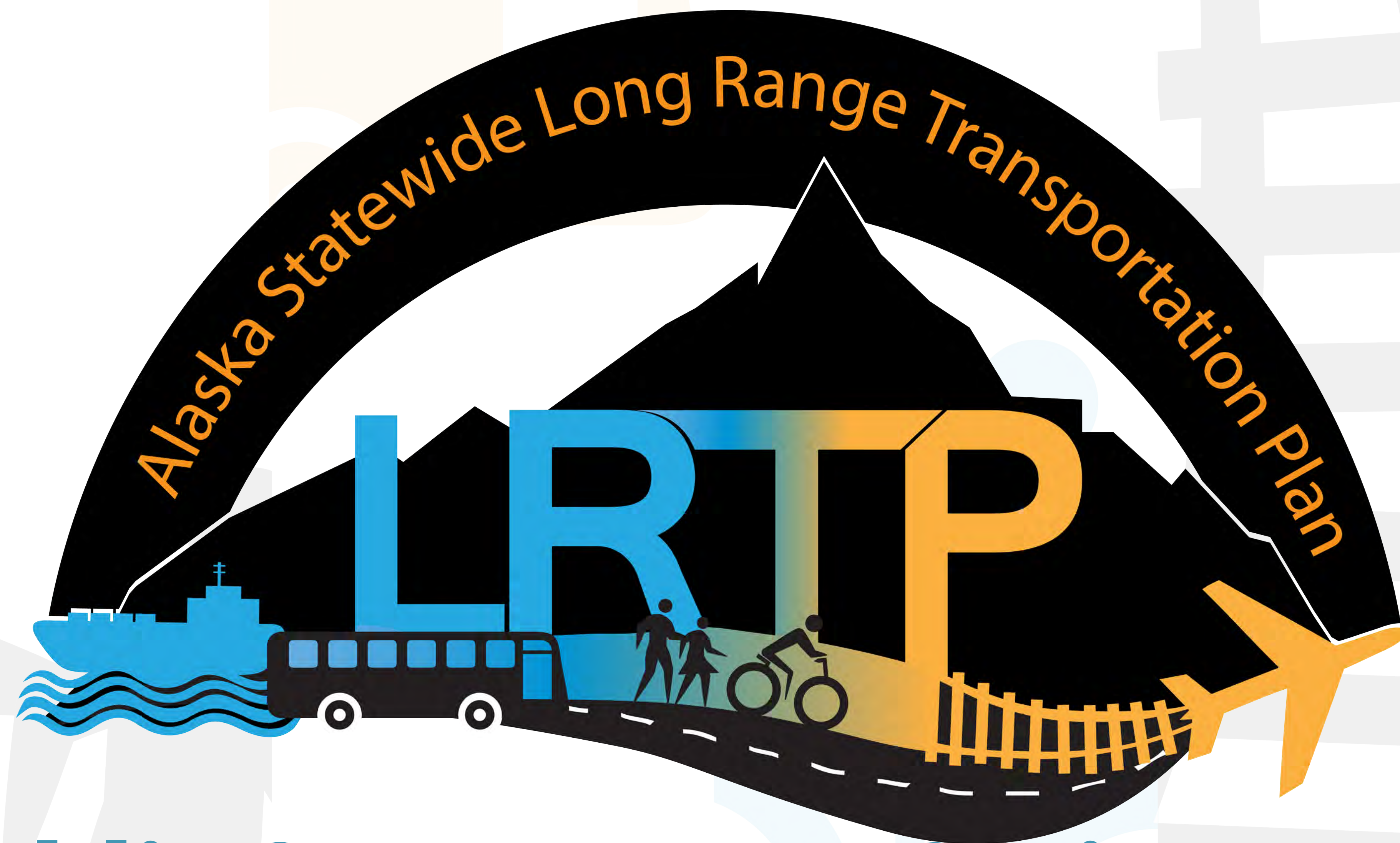


Welcome



Public Open House Spring 2014

Open House 4:30 - 8pm

Presentation at 5:30



Background

What is the LRTP? The Alaska Statewide Long Range Transportation Plan looks at highways, aviation, transit, rail, marine, bicycle and pedestrian transportation. It aligns with the State's policy direction; identifies future transportation challenges and opportunities; and ensures safe, reliable transportation for all Alaskans. The plan must be updated every five years.

What does the LRTP cover?

- Needs analysis by mode
- Policy recommendations
- Freight leads
- Performance goals
- Plan strategies and actions
- Future scenarios
- Priorities and capital investment needs
- Current and future funding forecast

What the plan

Does

- Identifies priorities
- Provides direction
- Sets goals
- Meets State and Federal requirements
- Prioritizes actions
- Sets performance measures

Does not

- List and identify projects
- Identify capital programs
- Identify specific costs
- Set local transportation priorities



Trends and Conditions

Population

- ↘ Anchorage/Mat-Su population growth (40%)
- ↘ Most other regions flat/slow growth
- ↘ Few population centers – rest of the population is dispersed
- ↘ Senior and veteran population growing fast - higher than the national average
- ↘ 47% of new construction in state in Mat-Su

Economy

- ↘ Job growth forecast highest in education and health services
- ↘ Anchorage will continue to be primary center of employment
- ↘ Volatile economy affected by global energy demand, strong underlying performance

Travel Demand

- ↘ Increase in number of vehicles, but not miles traveled
- ↘ Higher demand/capacity needs in urban areas
- ↘ More connections between population centers
- ↘ Increased demand for public transit



We want to know...

What works well today?

*Write your
thoughts on a
post-it note.*

*One thought per
post-it please.*



We want to know...

How would you measure performance ?

The number of accidents? Infrastructure conditions? Highway congestion? Delayed flights? Ferry reliability?

*Write your
thoughts on a
post-it note.*

*One thought per
post-it please.*



We want to know...

What needs improvement now? / future?

Write your thoughts on a post-it note.

One thought per post-it please.



We want to know...

What are the most important transportation issues confronting the state?

Put a flag on the issues / area you think are most critical.

<i>Connectivity</i>	<i>Environment</i>	<i>Financing</i>	<i>Economic Development</i>	<i>Freight</i>	<i>Goals/ Objectives/ Policies</i>	<i>Other Plans</i>	<i>Public Involvement</i>	<i>Transportation Issues</i>	<i>Other</i>



Process / Plan Elements

We are here



Dec 2014



Comments

Leave us a comment!
We want to hear from you!

Visit

www.dot.alaska.gov/lrtpplanupdate



to sign up for future plan updates and to learn more about this project.

What needs improvement now - or in the future?

What are the most important transportation issues confronting the state today?

How can the LRTP help your community?

What aspects of our transportation system work well?

